

A detailed architectural rendering of a futuristic, multi-tiered building complex. The structure is composed of numerous rectangular blocks of varying heights and colors, including metallic blues, greys, and warm browns. Some blocks are open, revealing interior spaces with people. The building is integrated with lush greenery, including trees and plants, and is situated on a rocky, hilly terrain. In the background, a vast, hazy desert landscape stretches to the horizon under a bright sky. A white circuit board pattern is overlaid on the bottom right corner of the image.

CAPABILITIES STATEMENT



**Building your visions and
creating reality.**



About PLADCO Consulting and Advisory Division

Planning And Development Co. Ltd. (PLADCO), is a Saudi Consultancy, Engineering, Procurements and Construction Company. It has been a contributor to Saudi Arabia's industrial and infrastructure sectors since 2009 with reliable, multi-dimensional consulting, engineering, procurement, and construction services.

Currently, PLADCO is well-recognized among the leaders in the fields of Oil & Gas, Mining, Power, Aerospace, Strategy and Policy, HR & General Business Management, Finance, Risk and Tax, M&A, ICT, Health, Social Care & Community, Mobility (Transportation), Environment & Sustainability, and Manufacturing.

In addition to its role within a leading company responsible for major **infrastructure development, consulting, and advisory** in the **Kingdom and the wider Gulf region**. PLADCO has established itself as the leading choice of partner for an array of esteemed clients for above mentioned fields.

PLADCO's Winning Edge

With over 10,000 projects delivered, PLADCO prides itself in being a pioneer in delivering excellence.

Core Strength: Our strength lies in the expertise of our people and we believe in associating with right channel



Digital Transformation



Advisory



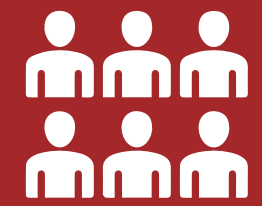
Consulting



Infrastructure Development



Environment & Sustainability



A well trained and achievement-oriented team of more than 25,000 people



Over 1,000 worldwide clients



Achieved milestone of 10,000 projects delivered and more than 100 active projects



Digital Transformation

A multi-dimensional outlook at streamlining various platforms that include but not limited to:

- ERP • CRM
- Cloud • Microsoft
- Azure



Advisory

Ensuring the delivery of verified services across domains to streamline the process with security, our domains include but not limited to:

- Accounting Advisory
- Finance • Merger & Acquisitions
- General Business Management
- HR Resources
- Supply Chain Management



Infrastructure Development

With a reputation for efficient, impeccable service, the company continues to expand its infrastructure development expertise, incorporating the latest and most advanced industry technologies, catering to sectors such as

- Real Estate • Mining • Oil & Gas • Power
- Aerospace and more



Consulting

By incorporation industry best practices into your business processes and management strategies, we can help you stay ahead of the competition and better serve your customers. Our services include;

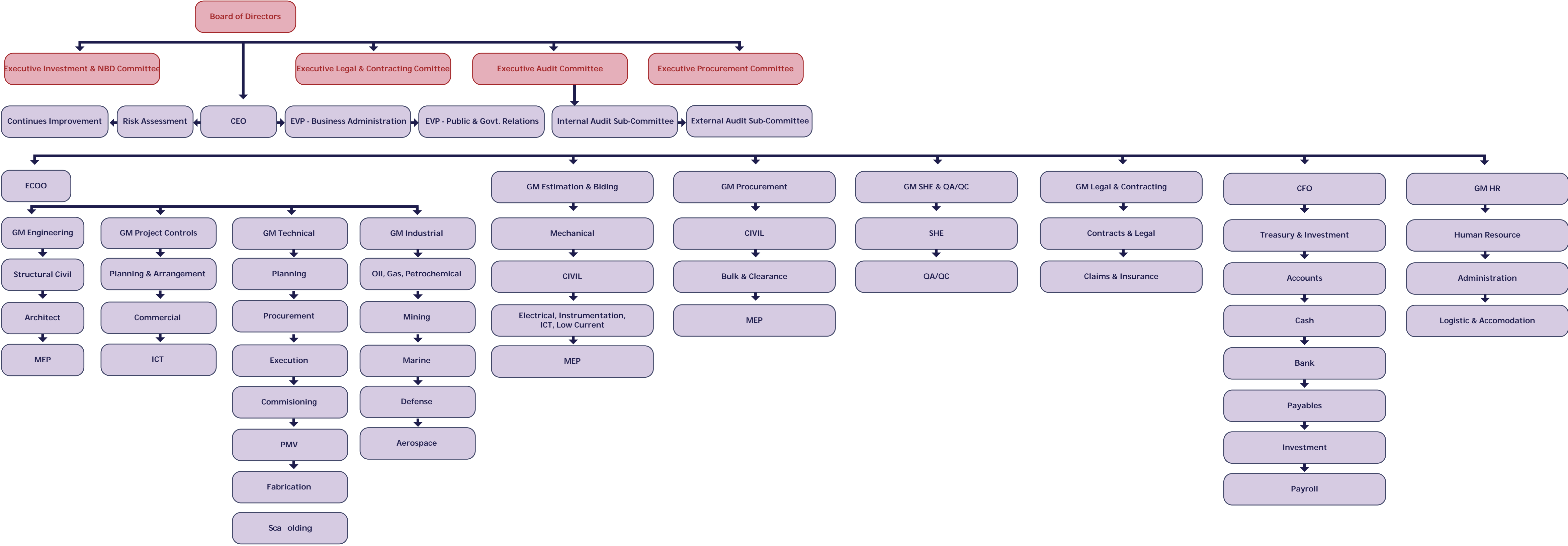
- Strategy and Policy • General Business Management
- Economic Insight • Finance, Risk and Tax
- M&A and Investment • Supply Chain & Procurement
- Human Resources • Health, Social Care & Community
- Mobility (Transportation) • Environment & Sustainability
- Real Estate • Technology & Digital • Manufacturing
- Business Strategy & Planning Support
- Change Management & Facilitation Support
- CMMI Process Development • Security Assessment
- Financial/Statistical Analysis • Training



Environment & Sustainability

- Environmental Mgmt. Systems, Environmental Due Diligence, ESG Financial Compliance
- Environmental Assessment Services (including any related technical studies, communications and liaison with regulators)
- Environmental Operation Services (e.g. field surveys, investigation equipment, services requiring marine vessels)
- Environmental Surveys and Monitoring (marine, terrestrial, air quality)
- Sustainability Services (e.g. strategies, modelling, rating systems)
- Environmental Digital Platforms / Technology Providers
- Environmental Stewardship Culture Change

Our People, Our Strength



Consulting falls under the periphery of Project & Planning

Our Experience & Resources

Across Industries

2,000

Management &
Administration

25,000

Total Employees

1,950

Operations &
Logistics

3,500

Engineers

Our Associate Partners



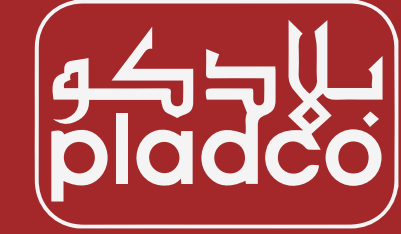
SW is a fast-expanding professional services network of experts in key locations around the world. We are a **global accounting and advisory network with over 10,000 people, including 500+ partners, in more than 80 offices across 16 regions**, connecting and collaborating to take care of your needs locally, nationally and internationally.



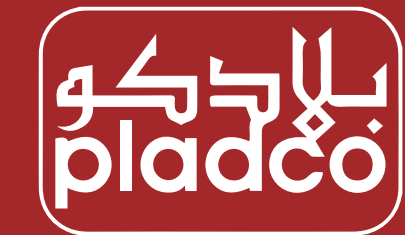
A&M provides global leadership, problem solving and value creation for companies across industries and around the world. We work as advisers, interim leaders and partners who tell you what you need to know, not always what you want to hear. For more than three decades, A&M has set the standard for helping organizations tackle complex business issues, boost operating performance and maximize stakeholder value.

7000+ Employees, 6 Continents, 35+ Years, 77 Offices, 35 Countries

Our Prestigious Clients



More Prestigious Clients



Company details.

CONSULTANCY COMPANY'S NAME

PLADCO & PARTNERS

HQ ADDRESS

8th Floor, Grand Tower, 4250 King Fahad Road,
8428 AlMohammadiyah District, Riyadh 12363,
Kingdom of Saudi Arabia

COMPANY LANDLINE NUMBER

+966 11 288 66 77

COMPANY MOBILE NUMBER

+966 505 36 45 98

COMPANY EMAIL ADDRESS

contact@pladco.com