

TECHNICAL



PROFILE

Letter of introduction

THE KINGDOM OF
SAUDI ARABIA

Joining forces to strengthen competitiveness

Firms that join forces are the foundations of innovation, especially high-tech design and construction related companies, which are frequently at the vanguard of pioneering research and technology.

The group coordination is a cooperative effort among various entities with different specialities to assure coherence in achieving common objectives and ensuring areas of need to focus the efforts and increase the success ratio by far.

PLADCO's principal mission is to orchestrate the collaborative efforts of its international team to support market growth in the Kingdom of Saudi Arabia. Codinachs Network main role is establishing strategic partnerships between PLADCO and proficient contractors and specialist consultants for their forthcoming projects in Saudi Arabia.



Our approach

PASSIONATE

Passion is the fuel that keeps us going. Perseverance and hard work is our key predictor of success.

SYNERGIES

Introducing the cluster cooperation system, we cut time to handover thanks to the team synergies and integration which led to joint success and better results.

International Consultancy

WITH LOCAL APPROACH

COORDINATED METHODOLOGY

The main advantage of implementing a coordinated work methodology is that it brings together the expertise and insight of each entity, in an attempt to establish a strategic approach for the coming years.

EFFICIENCY

The aim of our development strategy is to strengthen competitiveness of services by enhancing productivity of the related companies and organizations selected in the group.

Project Life Cycle

DESIGN PHASES



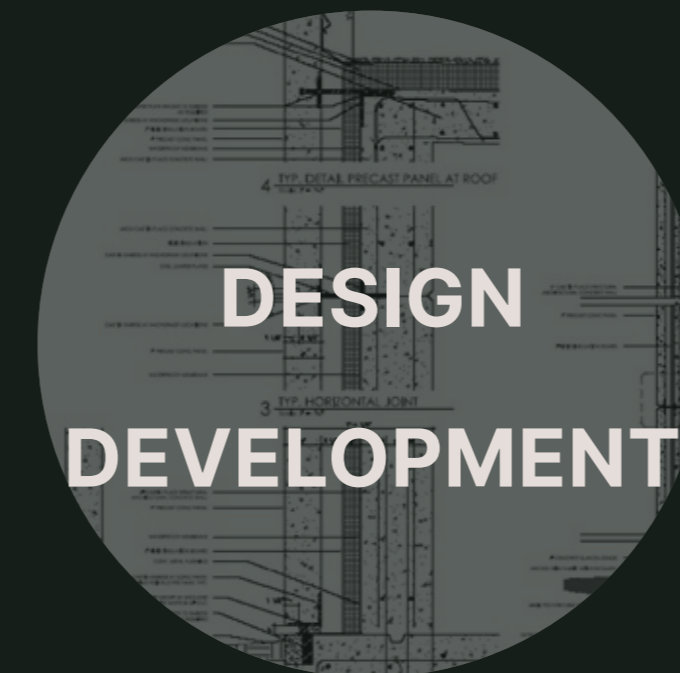
**PLANNING/
BID**



**CONCEPTUAL
DESIGN**



**SCHEMATIC
DESIGN**



**DESIGN
DEVELOPMENT**



**CONSTRUCTION
DOCUMENTS**



CONSTRUCTION



OPERATION

CONTENTS OF DELIVERABLES

- Bid Protocols
- Bid Standards
- Bid Templates
- Families Library

- Façade Approach
- Program Analysis
- Area & Massing Studies
- Norm Analysis
- Environmental Analysis
- Base Of Design

- Façade Definition
- STR Definition
- Area Definition
- LEED Evaluation
- Cost Estimation By Ratios

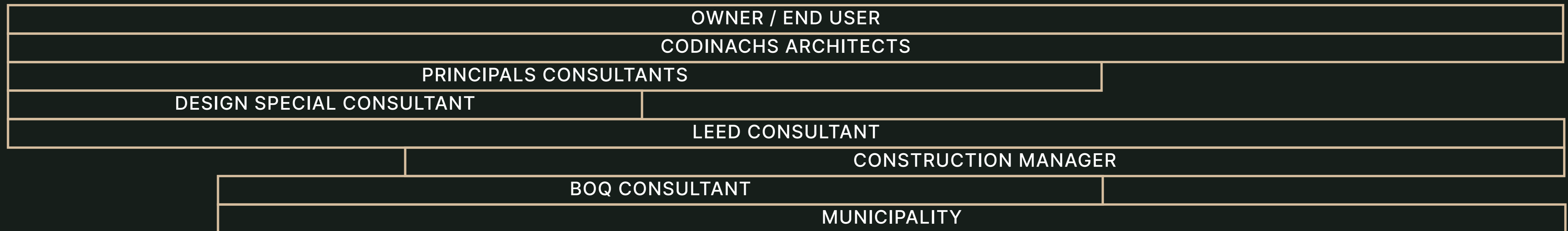
- Final Architecture
- Design
- LEED Details Analysis
- Preliminary Specs
- Cost Estimation
- Final Design
- 100% Coordinate

- Construction Definition
- Specifications
- Final BOQ

- As Built Model
- 4D Programming
- 5D Cost Estimation

- Operation Model
- Maintenance
- Building Documents

ACTORS & INTERFACES



PLADCO

BRIEF

PLADCO provides comprehensive EPC services for projects in various industries including oil and gas, petrochemical, energy, and water treatment. Their experienced team offers full project management support from initial planning and design to construction and commissioning.

Through our EPC services, PLADCO ensures timely and cost-effective project delivery while maintaining the highest standards of safety and quality.

PLADCO is well-recognized among the leaders in the fields of oil, gas, petrochemicals, mining, power, water, marine, ICT, security, safety, defense, aerospace, infrastructure, urban, environment and investment sectors.

25,000+
EMPLOYEES

1,000+
WORLDWIDE CLIENTS

10,000+
WORLDWIDE COMPLETED PROJECTS

ANNUAL TURNOVER

PLADCO \$ 5.7B
MAIN ENG. & ARCH. JV PARTNER \$ 65M
MAIN CONSTRUCTION JV PARTNER \$ 1.1B



HQ_ THE KINGDOM
OF SAUDI ARABIA

ASSOCIATED COMPANIES:



ITEAC



Gulf Ababeel



GEOCODES



Kawn Environmental Services

KAWN



Management Board



DR. AMIN MOHAMMED ABDULLAH ALSHANQITI

Businessman, Investor & Proprietor



MR. Hamad Saad AlOmar

Board Member



DR. SAMER ALHAMMAD

Board Member



MR. Basim Hussain

Board Member



MR. HENDRA UTOMO

Director of Business
Administration and Contracting



MR. AHMED ALSHANQITI

Board Member

Expertise Fields



Consultancy



EPC



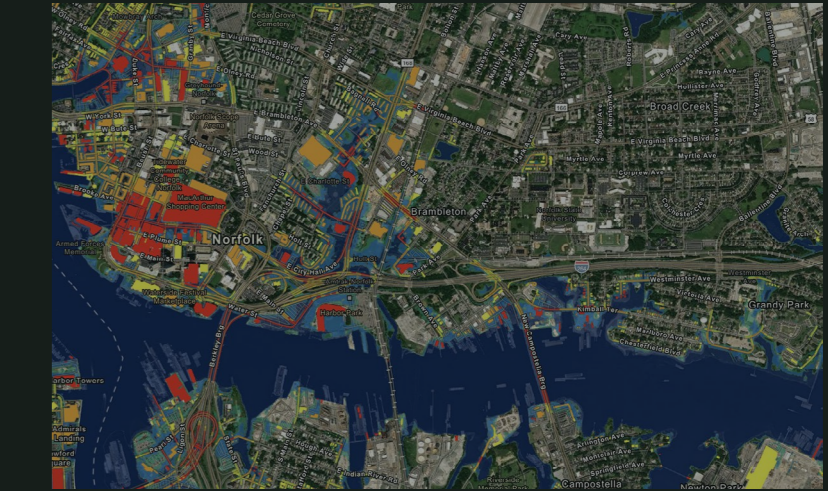
Investment



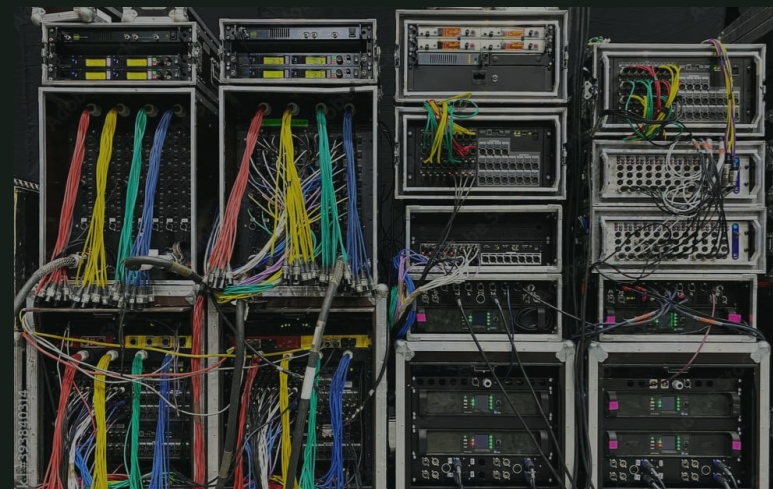
Logistics



Manufacturing



GIS



MEP/
Low Current



Petrochemical



Mining



Renewable
energy



Solar



Smart
Cities

EPC

Engineering



Procurement



Construction



ISO Certificates



Certificate of Registration
This is to certify that
PLANNING & DEVELOPMENT CO. LTD.



AT
AL SAFWA CENTRE, AL SULAYMANIYAH DISTRICT,
RIYADH 11575 KINGDOM OF SAUDI ARABIA

has been assessed and certified by Vatsin Certification as meeting the requirements of

ISO 45001:2018
(Occupational Health & Safety Management System)

For the following activities
ENGINEERING, PROCUREMENT AND CONSTRUCTIONS (EPC) CONTRACTOR, CONSULTANCY SERVICE PROVIDER, INSPECTION, REPAIR, INSTALLATIONS, RENOVATION, OPERATION AND MAINTENANCE CONTRACTOR FOR: INFRASTRUCTURE AND SUPERSTRUCTURES PROJECTS: AIRPORTS & AIRPORTS FACILITIES, HIGHWAYS, TUNNELS, BRIDGES, ROADS, STREETS, WALKWAYS, BULK HOUSING, HIGH RISE BUILDINGS, MARINES, RESIDENTIAL & COMMERCIAL BUILDINGS, CIVIL AND ELECTROMECHANICAL WORKS, HEATING SYSTEMS, SOLAR SYSTEMS, SANITARY WARE, REFRIGERATION & AIR CONDITIONING SYSTEMS AND PIPING WORKS, DATA CENTERS, TELECOMMUNICATIONS AND ICT PROJECTS

IAF CODE - 28 & 34
Certificate No : VC23031940

To verify this certificate please visit at www.vatsincertification.com

Date of Initial Registration : 12-09-2024 Revision No. : 00
Re-Certification Due : 11-09-2027 1st Surveillance : 11-09-2025
2nd Surveillance : 11-09-2026 Certificate Expiry : 11-09-2027






VATSIN CERTIFICATION PRIVATE LIMITED
Accredited by IAS (International Accreditation Services, Inc.)
3060 Saturn Street, Suite 100, Brea, California 92821 United States of America

* Validity of the Certificate is subject to successful completion of surveillance audits on or before of due date. (In case Surveillance audit is not allowed to be conducted, this certificate shall be suspended/annulled)
* Certificate is the Property of VATSIN CERTIFICATION and shall be returned immediately when demanded.
* E-mail : info@vatsincertification.com Website : www.vatsincertification.com



Certificate of Registration
This is to certify that
PLANNING & DEVELOPMENT CO. LTD.



AT
AL SAFWA CENTRE, AL SULAYMANIYAH DISTRICT,
RIYADH 11575 KINGDOM OF SAUDI ARABIA

has been assessed and certified by Vatsin Certification as meeting the requirements of

ISO 14001:2015
(Environmental Management System)

For the following activities
ENGINEERING, PROCUREMENT AND CONSTRUCTIONS (EPC) CONTRACTOR, CONSULTANCY SERVICE PROVIDER, INSPECTION, REPAIR, INSTALLATIONS, RENOVATION, OPERATION AND MAINTENANCE CONTRACTOR FOR: INFRASTRUCTURE AND SUPERSTRUCTURES PROJECTS: AIRPORTS & AIRPORTS FACILITIES, HIGHWAYS, TUNNELS, BRIDGES, ROADS, STREETS, WALKWAYS, BULK HOUSING, HIGH RISE BUILDINGS, MARINES, RESIDENTIAL & COMMERCIAL BUILDINGS, CIVIL AND ELECTROMECHANICAL WORKS, HEATING SYSTEMS, SOLAR SYSTEMS, SANITARY WARE, REFRIGERATION & AIR CONDITIONING SYSTEMS AND PIPING WORKS, DATA CENTERS, TELECOMMUNICATIONS AND ICT PROJECTS

IAF CODE - 28 & 34
Certificate No : VC23028301

To verify this certificate please visit at www.vatsincertification.com

Date of Initial Registration : 12-09-2024 Revision No. : 00
Re-Certification Due : 11-09-2027 1st Surveillance : 11-09-2025
2nd Surveillance : 11-09-2026 Certificate Expiry : 11-09-2027






VATSIN CERTIFICATION PRIVATE LIMITED
Accredited by IAS (International Accreditation Services, Inc.)
3060 Saturn Street, Suite 100, Brea, California 92821 United States of America

* Validity of the Certificate is subject to successful completion of surveillance audits on or before of due date. (In case Surveillance audit is not allowed to be conducted, this certificate shall be suspended/annulled)
* Certificate is the Property of VATSIN CERTIFICATION and shall be returned immediately when demanded.
* E-mail : info@vatsincertification.com Website : www.vatsincertification.com



Certificate of Registration
This is to certify that
PLANNING & DEVELOPMENT CO. LTD.



AT
AL SAFWA CENTRE, AL SULAYMANIYAH DISTRICT,
RIYADH 11575 KINGDOM OF SAUDI ARABIA

has been assessed and certified by Vatsin Certification as meeting the requirements of

ISO 9001:2015
(Quality Management System)

For the following activities
ENGINEERING, PROCUREMENT AND CONSTRUCTIONS (EPC) CONTRACTOR, CONSULTANCY SERVICE PROVIDER, INSPECTION, REPAIR, INSTALLATIONS, RENOVATION, OPERATION AND MAINTENANCE CONTRACTOR FOR: INFRASTRUCTURE AND SUPERSTRUCTURES PROJECTS: AIRPORTS & AIRPORTS FACILITIES, HIGHWAYS, TUNNELS, BRIDGES, ROADS, STREETS, WALKWAYS, BULK HOUSING, HIGH RISE BUILDINGS, MARINES, RESIDENTIAL & COMMERCIAL BUILDINGS, CIVIL AND ELECTROMECHANICAL WORKS, HEATING SYSTEMS, SOLAR SYSTEMS, SANITARY WARE, REFRIGERATION & AIR CONDITIONING SYSTEMS AND PIPING WORKS, DATA CENTERS, TELECOMMUNICATIONS AND ICT PROJECTS

IAF CODE - 28 & 34
Certificate No : VC23017911

To verify this certificate please visit at www.vatsincertification.com

Date of Initial Registration : 12-09-2024 Revision No. : 00
Re-Certification Due : 11-09-2027 1st Surveillance : 11-09-2025
2nd Surveillance : 11-09-2026 Certificate Expiry : 11-09-2027






VATSIN CERTIFICATION PRIVATE LIMITED
Accredited by IAS (International Accreditation Services, Inc.)
3060 Saturn Street, Suite 100, Brea, California 92821 United States of America

* Validity of the Certificate is subject to successful completion of surveillance audits on or before of due date. (In case Surveillance audit is not allowed to be conducted, this certificate shall be suspended/annulled)
* Certificate is the Property of VATSIN CERTIFICATION and shall be returned immediately when demanded.
* E-mail : info@vatsincertification.com Website : www.vatsincertification.com

111

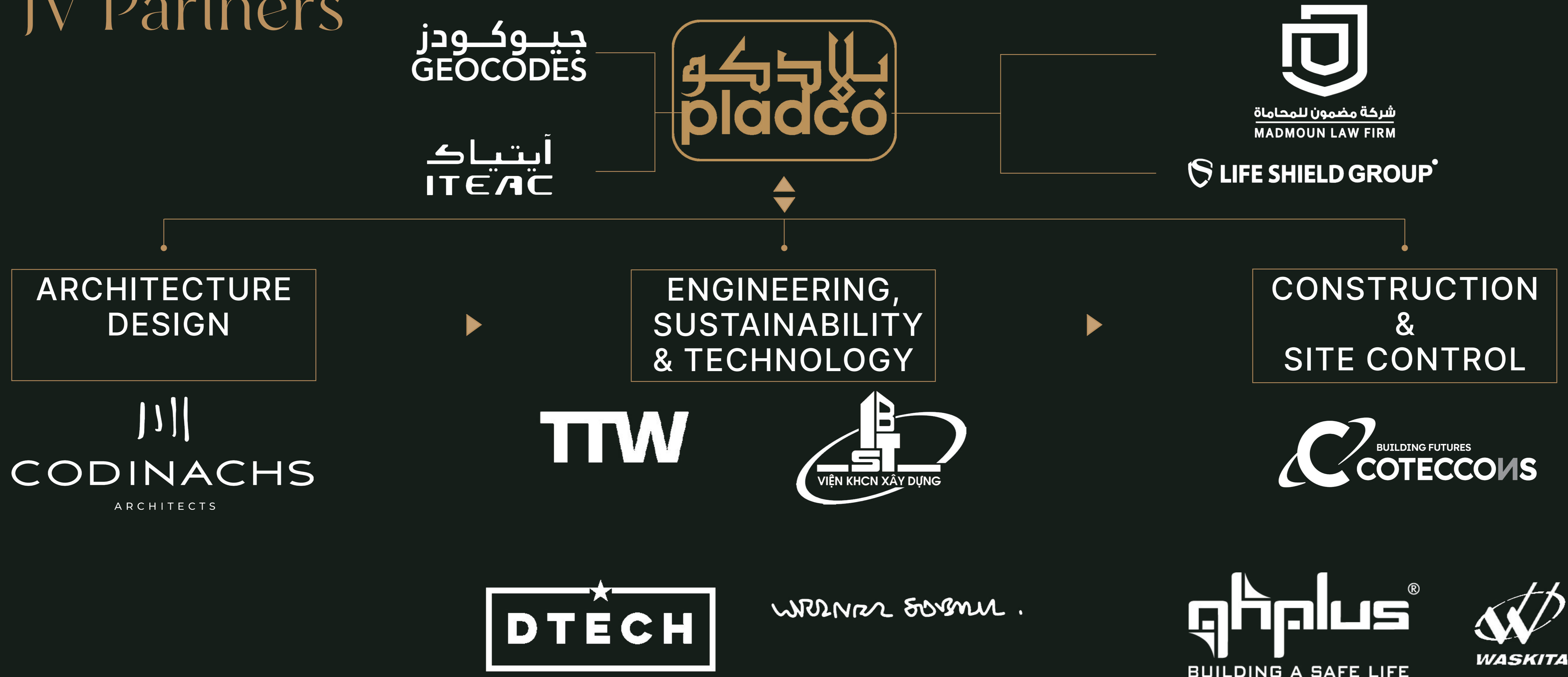
An aerial night view of a city, likely London, showing a river (the River Thames) and a large circular structure (the London Eye) in the foreground. The city lights are visible in the background, and the overall scene is dark with a blue and gold color palette.

TRANSPORT HUBS

Designing the Epicentres of Connectivity

THE FUTURE HUBS BEYOND HORIZONS

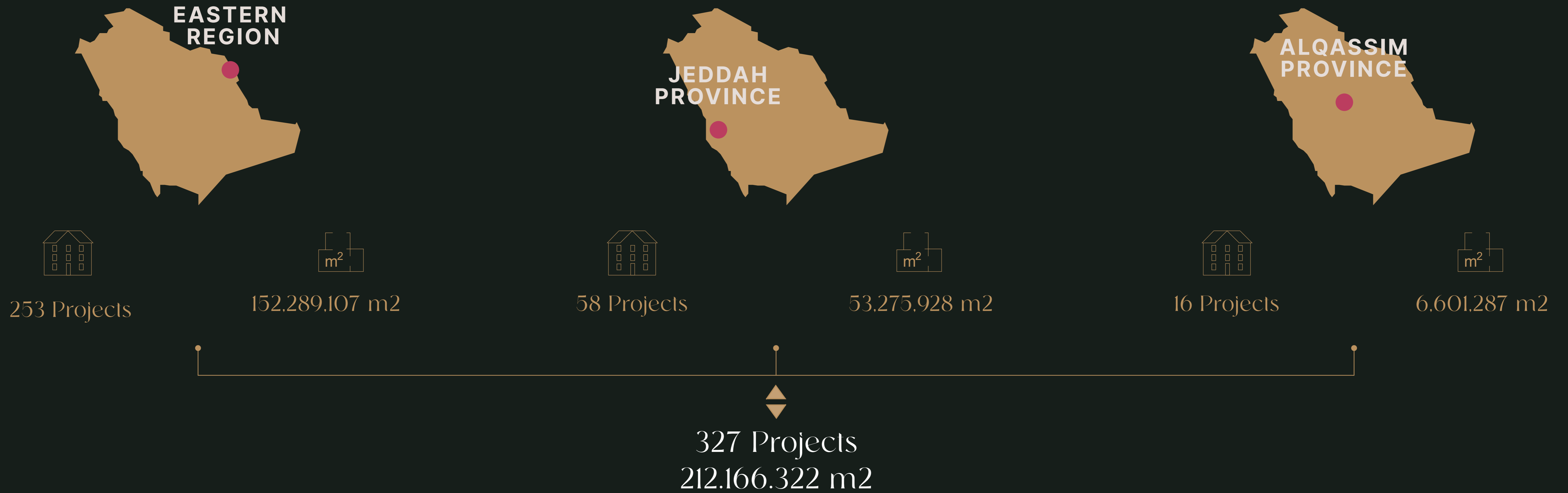
Main JV Partners



PL
AD
CO



PLADCO Recent Achievements in Saudi Arabia



An architectural rendering of a modern cityscape. The scene is dominated by several tall, multi-story buildings with glass facades and balconies. In the foreground, there is a large, circular building with a distinctive, textured, golden-brown exterior. The city is surrounded by lush greenery, including palm trees and various other plants. A road with cars and a pedestrian walkway are visible. The overall atmosphere is bright and modern.

Architecture
&
Engineering Design

PROJECT LIFE CIRCLE



INVESTMENT
&
DEVELOPMENT



ARCHITECTURE
&
ENG. DESIGN



CONSTRUCTION
&
SITE CONTROL



OPERATION
&
MANAGEMENT

CODINACHS

ARC

川
CODINACHS
ARCHITECTS

HITECTS

SHANGHAI, CHINA

2014

CODINACHS ARCHITECTS



Shiliupu Waterfront

CLIENT: JINMAO

SOW: MASTERPLAN, ARCHITECTURE (CD & SD), LANDSCAPE & INTERIOR DESIGN

STATUS: BUILT



The Shi Liu Pu Waterfront Landscape is a series of structures to provide shade in the waterfront of the Bund in Shanghai. The metal structures are strategically placed along the waterfront so they serve as shelter for the different ferries of the Huangpu river. The parametric geometry of the structure beautifully embrace the circulations of the landscape in the waterfront.

AWARD Shiliupu
MIPIM Asia Awards 2011 Urban Regeneration Gold Prize The
Shiliupu, Shanghai

SHILIPU WATERFRONT

EXECUTIVE SUMMARY

SHANGHAI, CHINA



SHILIPU WATERFRONT



SHILIPU WATERFRONT

SHANGHAI, CHINA



SHILIPU WATERFRONT



SHILIUPU WATERFRONT

EXECUTIVE SUMMARY

TAYLOR
THOMSON
WHITTING

TTW



Western Sydney International Airport

SOW:
STRUCTURAL + CIVIL + FAÇADE +
CONSTRUCTION ENGINEERING



The new Western Sydney Airport is set to become a world-class international airport, servicing up to 10 million passengers a year. TTW worked in close collaboration with the contractor and suppliers to optimise material usage and designs, enabling a practical installation method to develop and certify the feature ceiling. We needed to find the 'sweet spot' where the architectural vision met material limitations turning our client's goals into a reality.

Architect Cox Architecture

White Bay Cruise Passenger Terminal

SOW:
TTW ADVANCE, STRUCTURAL, CIVIL,
FAÇADE ENGINEERING



TTW

The White Bay International Cruise Terminal is a new cruise facility located in Sydney Harbour, to serve Australia's rapidly expanding leisure cruise industry.

The design features a contemporary roof canopy draped from a historically significant gantry crane structure. The gantry structure has been retained as a memory of the site's previous use as a homeport for the world's first regular international containerised shipping service, commencing operations between Sydney and Europe in the late 1960's.

Architect JPW



AWARDS

2014

THE CHICAGO ATHENAEUM: MUSEUM OF ARCHITECTURE AND DESIGN AND
THE EUROPEAN CENTRE FOR ARCHITECTURE ART DESIGN AND URBAN STUDIES: THE
INTERNATIONAL ARCHITECTURE AWARD

- AIA NATIONAL AWARDS – HARRY SEIDLER AWARD- COMMERCIAL ARCHITECTURE
- AIA NATIONAL AWARDS, NATIONAL COLORBOND AWARD FOR STEEL ARCHITECTURE
- AIA NSW AWARDS – PUBLIC ARCHITECTURE AWARD
- AIA NSW AWARDS – SUSTAINABLE ARCHITECTURE AWARD
- AIA NSW AWARDS – COLORBOND AWARD FOR STEEL ARCHITECTURE
- ACSE (NSW) – AWARD FOR EXCELLENCE IN DESIGN, LARGE BUILDINGS >\$25M
- ASI AWARDS NSW& ACT, HIGH COMMENDATION – LARGE PROJECTS
- WORLD ARCHITECTURE FESTIVAL AWARDS – WINNER, TRANSPORT CATEGORY
- WORLD ARCHITECTURE FESTIVAL INSIDE AWARDS – HIGH COMMENDATION

SYDNEY, NSW

2016

TTW

Wynyard Walk

SOW:
STRUCTURAL + CIVIL + FAÇADE ENGINEERING

TTW

WYNYARD WALK



Opened to the public in late 2016, Wynyard Walk is a major transport infrastructure designed to provide pedestrians with a safe, swift, and efficient method of movement between Wynyard Train Station and the new and expanding areas of the Barangaroo waterfront precinct and Sydney CBD western corridor. Wynyard Walk components consist of a new civic entry building for Wynyard Station, a 180m long pedestrian tunnel (110m of driven tunnel plus 70m cut and cover), a western tunnel portal, a plaza and a bridge spanning Sussex Street. Architect Woods Bagot

EXECUTIVE SUMMARY

川



AWARDS

2018

AEAA – SYDNEY – EXCELLENCE ENGINEERING AWARD

AEAA – BRADFIELD AWARD

AUSTRALIAN INTERIOR DESIGN AWARDS BEST OF STATE NEW SOUTH WALES

AUSTRALIAN INTERIOR DESIGN AWARDS BEST OF SUSTAINABILITY ADVANCEMENT AWARD

AUSTRALIAN INTERIOR DESIGN AWARDS BEST OF PUBLIC DESIGN

AIA NSW – HERITAGE ARCHITECTURE FINALIST

AIA NSW – URBAN DESIGN FINALIST

PROPERTY COUNCIL OF AUSTRALIA – FINALIST FOR BEST PUBLIC BUILDING

2017

WORLD ARCHITECTURE NEWS AWARDS – TRANSPORT

NATIONAL MBA EXCELLENCE AWARD – CIVIL/INFRASTRUCTURE \$25M AND OVER

NSW MBA EXCELLENCE AWARD – CIVIL ENGINEERING \$50M AND OVER

NSW MBA EXCELLENCE AWARD – INNOVATION IN CONSTRUCTION TECHNIQUE/EQUIPMENT

NSW CONSULT AUSTRALIA AWARDS – DESIGN INNOVATION AWARD – HIGHLY COMMENDED

NSW CIA AWARDS – EXCELLENCE IN INFRASTRUCTURE PROJECTS

ACSE AWARDS – EXCELLENCE IN STRUCTURAL ENGINEERING – LARGE BUILDING PROJECTS

NSW AIA AWARDS – PUBLIC ARCHITECTURE – COMMENDATIONS

NSW AIA AWARDS – URBAN DESIGN – COMMENDATIONS

Chatswood Transport Interchange

SOW:
STRUCTURAL, CIVIL ENGINEERING



Chatswood Interchange is a world class intermodal public transport interchange providing convenient and efficient public transport access, quality open spaces, improved urban amenity and well developed buildings of high architectural and construction quality. The Interchange facility is a critical component of the underground passenger line connecting Epping and Chatswood, providing frequent rail services to the expanding employment, education and retail precincts at Macquarie Park and North Ryde.

Architect Design Inc/ Cox Architecture



2014

TTW



AWARDS

2015

CTBUH – URBAN HABITAT AWARD FINALIST
AIA NSW – COMMENDATION AWARD FOR URBAN DESIGN
PIA NSW – GREAT PLACE' AWARD FOR PLANNING EXCELLENCE

2014

ACSE STRUCTURAL AWARDS – LARGE BUILDING COMMENDATION

2009

ENGINEERING PROJECTS – SPECIAL MENTION FROM THE CONCRETE INSTITUTE OF AUSTRALIA
ACEA SILVER AWARD AND HIGH COMMENDATION

2008

EA NSW – ENGINEERING EXCELLENCE AWARD FOR INFRASTRUCTURE

Overseas Passenger Terminal (OPT)

SOW:
STRUCTURAL + CIVIL + FAÇADE ENGINEERING

TTW



The objective of The Overseas Passenger Terminal (OPT) project was to upgrade and expand the existing building for the booming cruising market in a manner that also accommodates a diverse range of functions and appreciates its unique context, whilst remaining sympathetic to the existing structure.

Architect JPW

SYDNEY, NSW

2024

TTW

Sydney Metro Pitt Street Station + OSD

SOW:
STRUCTURAL + CONSTRUCTION
ENGINEERING

TTW

SYDNEY METRO PITT STREET STATION + OSD

川



TTW has been engaged by the consortium of Oxford Properties and CPB Contractors to provide structural and construction engineering services for the new Pitt Street Metro Station and the oversite development (OSD) tower above.

Architect Station – Foster + Partners, Cox
Architecture & OSD – Bates Smart Architects

EXECUTIVE SUMMARY

Expertise Fields

TTW

Melbourne Airport
T1 & T2 Amenities
Upgrades Stage 2



STRUCTURAL ENGINEERING

Sydney Airport



STRUCTURAL ENGINEERING

Hong Kong
International
Airport, Terminal 2



STRUCTURAL ENGINEERING

INSTITUTE FOR
BUILDING SCIENCE
AND
TECHNOLOGY



Expertise Fields

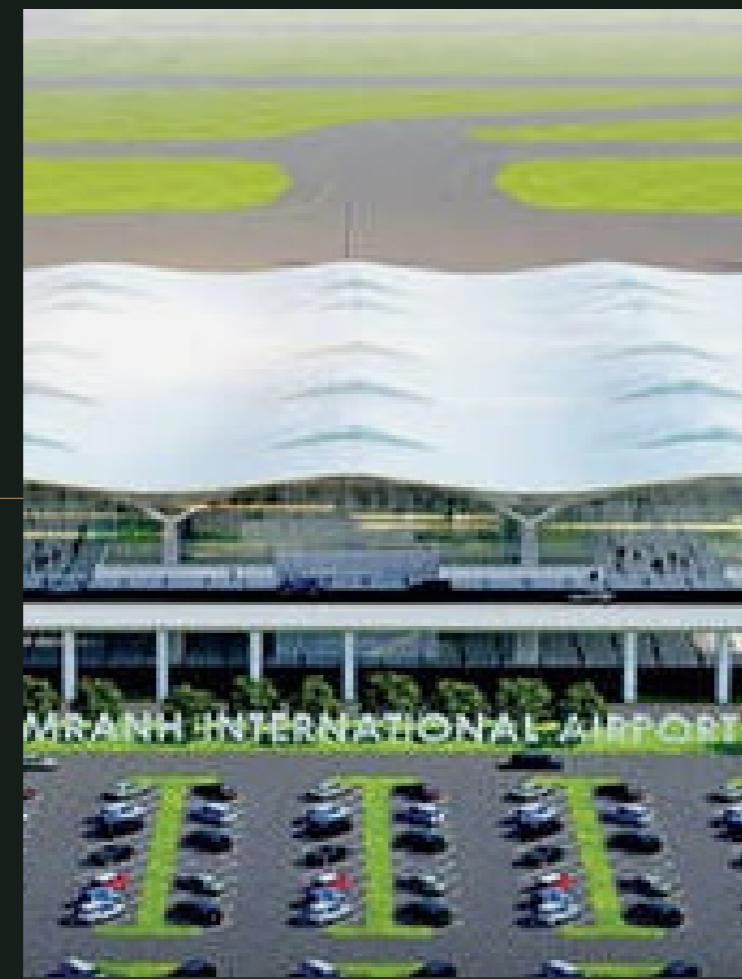


NOI BA CARGO TERMINAL



BUILDING INSPECTION
BEAM/SLAB DEFLECTION
INSPECTION

CAM RANH AIRPORT TERMINAL



STATIC AND ULTRASONIC
TESTS FOR PILES

WUER

NER

WUENRZ SOBMA .

SOBEK



Kuwait International Airport (Terminal 2)

SOW:

STRUCTURAL ENGINEERING OF THE MAIN STRUCTURE, INCLUDING CONSTRUCTION DOCUMENTS AND CONCRETE SHOP DRAWINGS
FACADE ENGINEERING LOD400 BIM MODELLING OF STRUCTURE AND FACADE COMPONENTS



WERNER SOBEEK .

The new Terminal 2 of Kuwait International Airport will provide the highest levels of comfort for passengers while also setting a new environmental benchmark for airport buildings. The roof structure of the Y-shaped terminal building has outer dimensions of approx. 1130 m x 980 m by a height between 25 – 55 m. The main structure consists of concrete elements with internal post-tensioned tendons and external post-tensioned cable stays.

Architects
Foster + Partners, London/Great Britain

BANGKOK, THAILAND

2001 - 2006

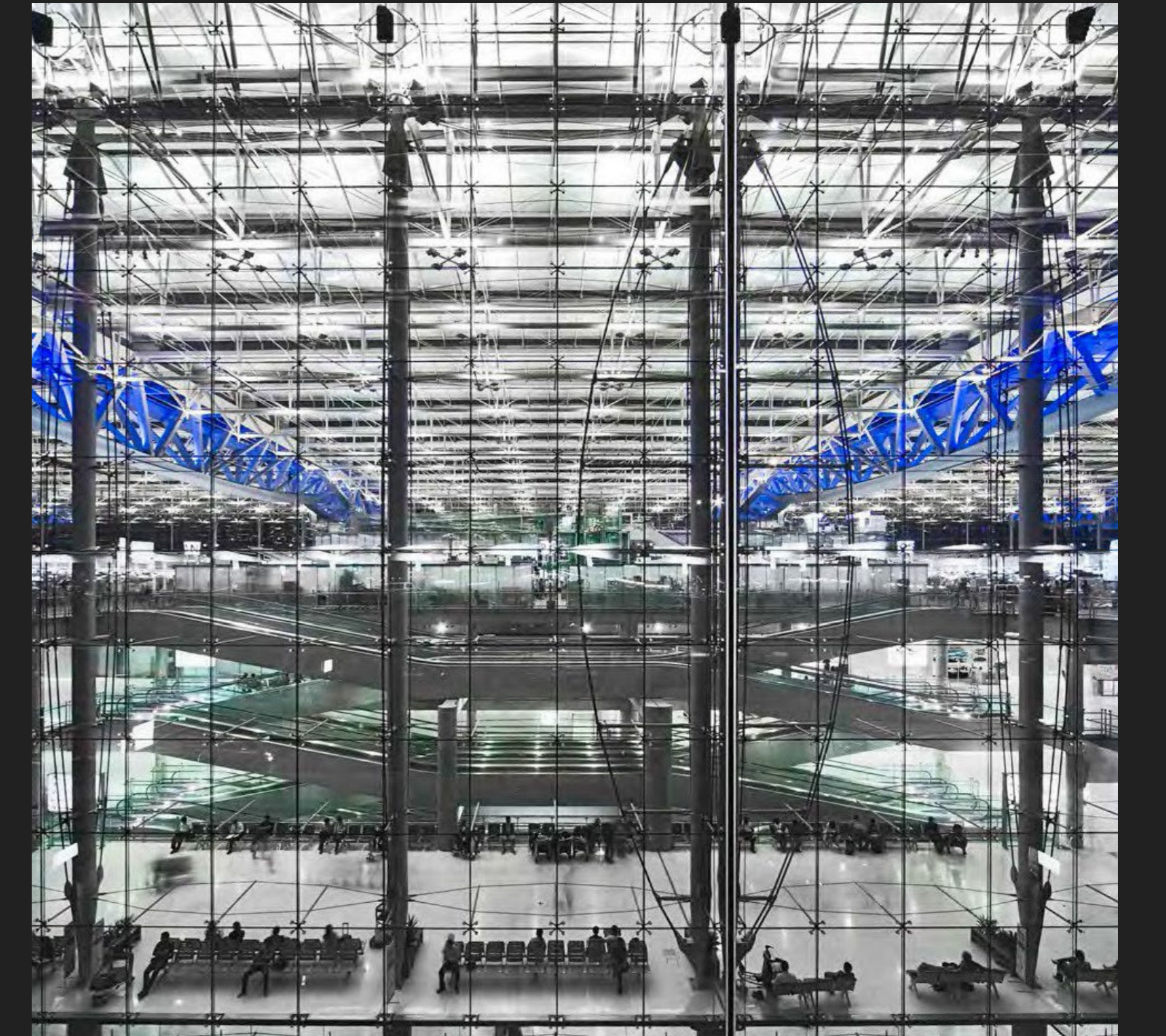
WERNER SOBEK

Bangkok International Airport

SOW:
SERVICES RENDERED BY WERNER SOBEK
STRUCTURAL AND FACADE ENGINEERING

WERNER SOBEK .

BANGKOK INTERNATIONAL AIRPORT



The thin roof of the New Bangkok International Airport „floats“ in the air at a height of 40 metres, a length of 561 m and a width of 210 m and is supported by only 16 columns. This results in spans of 81 m for the longitudinal subsidiary beams and 126 m for the principal beams, the length of the cantilevers being 42 m. The roof skin consists of louvres offering protection against sun and rain; these have a span of 9 metres and are designed like aircraft wings. Below the roof is the completely glazed terminal building.

Architects

JAHN Architects, Chicago/USA

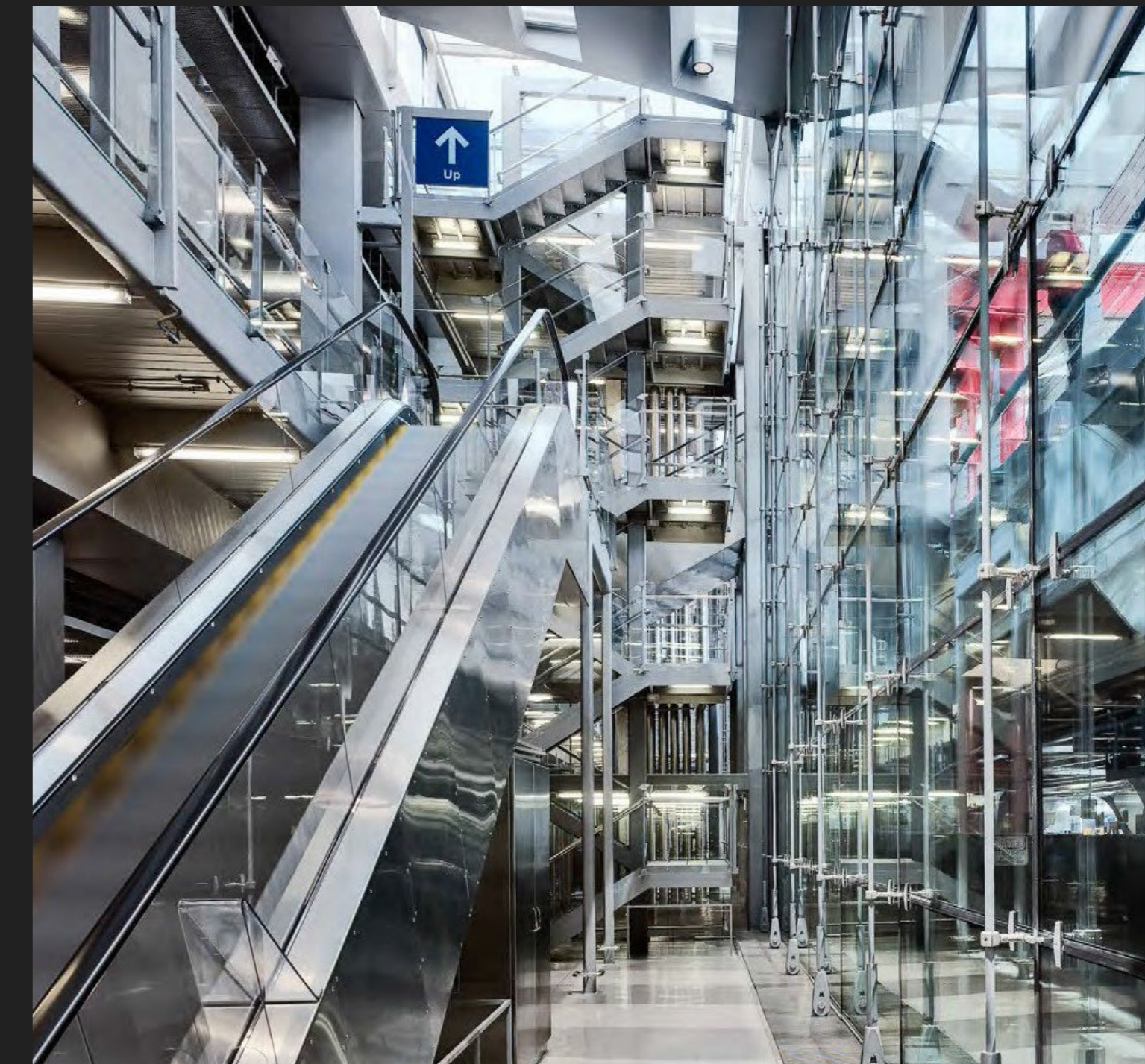
EXECUTIVE SUMMARY

BANGKOK, THAILAND



BANGKOK INTERNATIONAL AIRPORT

O'Hare Airport



SOW:
SERVICES RENDERED BY WERNER SOBEEK
FACADE ENGINEERING
AND SPECIAL STRUCTURES

WERNER SOBEEK .

The International Chicago O'Hare Airport was enhanced by a cantilevered canopy. This structure has a width of about 20 m and allows the suspension of a 12 m high prestressed glazed cable curtainwall. Prestress in the façade is produced by means of the cables only, i.e. no springs or other elements are required to maintain a constant level of prestress. Since September 11, 2001, the protection of public buildings such as airports against terror attacks has become of primary concern of the clients.

Architects
Jahn, Chicago/USA

GERMANY

1998 - 2000

WERNER SOBEEK

Terminal 2, Cologne-Bonn Airport

SOW:

SERVICES RENDERED BY WERNER SOBEEK
FULL ENGINEERING SERVICE EXCEPT SITE OBSER-
VATION FOR STRUCTURAL ENGINEERING OF
FACADES AND SPECIAL STRUCTURES, STEEL
STRUCTU- RES FOR MULTI-STORY CAR PARK

WERNER SOBEEK .

The rapidly expanding Cologne-Bonn Airport was enlarged by a new terminal building at the end of the 1990s. The completely glazed façade of the new Terminal 2 building is 800 m long. It is divided into sections 40 to 70 m long and varies in height between 10 and 20 m. The special feature of this façade is that it consists of thermal glazing panels fixed in point-like mountings. This subjects the load-bearing structure to extreme deformation stresses.

Architects
JAHN Architects, Chicago/USA

TERMINAL 2, COLOGNE-BONN AIRPORT

EXECUTIVE SUMMARY



GERMANY

TERMINAL 2, COLOGNE-BONN AIRPORT



GERMANY

2003 - 2004

WERNER SOBEEK

Terminal M, Cologne-Bonn Airport

SOW:
SERVICES RENDERED BY WERNER SOBEEK
STRUCTURAL ENGINEERING
FACADE ENGINEERING

WERNER SOBEEK .

TERMINAL M, COLOGNE-BONN AIRPORT

川



On a surface of 130 × 30 m, a new terminal was created at the Cologne/Bonn Airport in order to cope with the constantly rising number of passengers, especially in the low-cost carrier section. The hall structure is made of arched roof trusses, consisting of welded steel sections. These trusses span over the interior without any columns. Horizontal bracing is achieved through several slanting hinged columns.

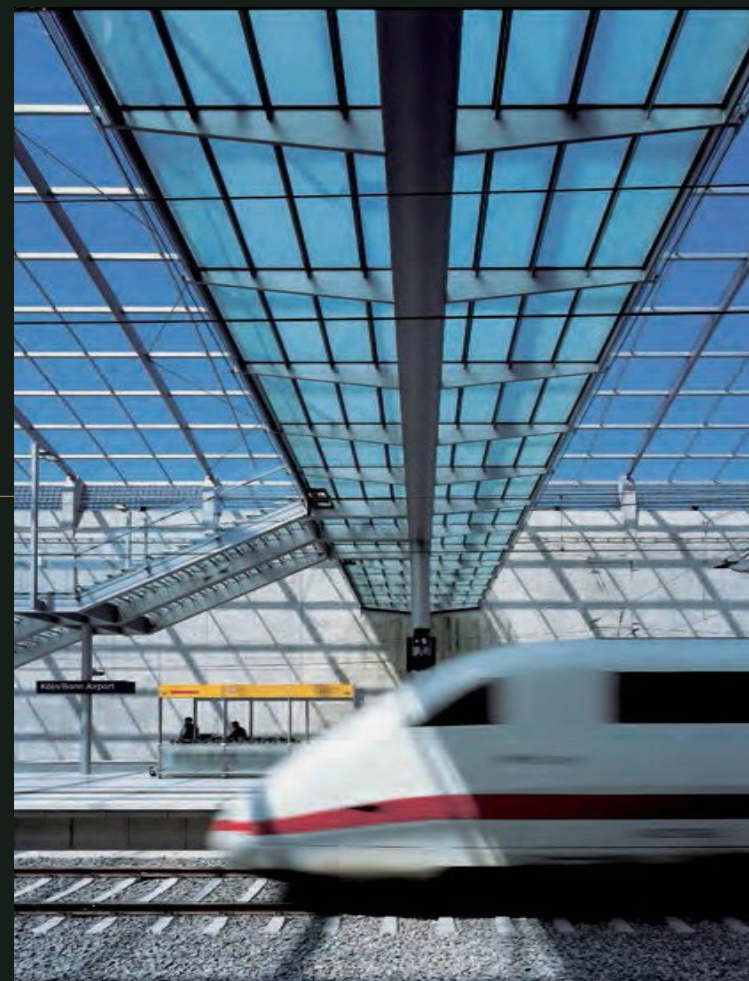
Architects
Jahn, Chicago/USA

EXECUTIVE SUMMARY

Expertise Fields

WERNER SOBEM

Mainline station
at Cologne-Bonn
Airport



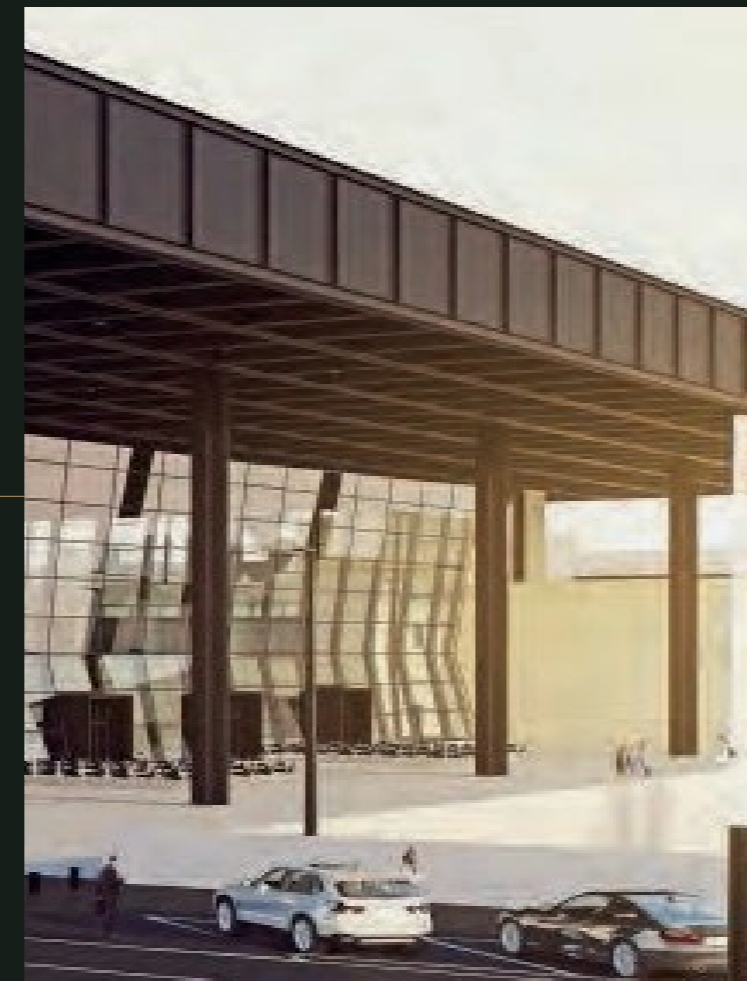
SERVICES BY WERNER SOBEM:
STRUCTURAL ENGINEERING OF
THE STEEL CONSTRUCTION

S21 Underground
Station
Stuttgart



SERVICES BY WERNER SOBEM:
STRUCTURAL ENGINEERING
OF THE STATION ROOF
(PHASES 4 - 6, 7 AND 8
ACCORDING TO GERMAN
HOAI) FACADE ENGINEERING
(CONSTRUCTION DESIGN)

Terminal 3 (new
build), Frankfurt
Airport



SERVICES BY WERNER SOBEM:
FACADE ENGINEERING
(WP 3-6)

Lufthansa Cargo
Center LCC Neo



SERVICES BY WERNER SOBEM:
STRUCTURAL EXPERTISE

Lufthansa Aviation
Center, Frankfurt



SERVICES BY WERNER SOBEM:
STRUCTURAL ENGINEERING
FACADE ENGINEERING

An aerial photograph of a construction site on a high-rise building. The image shows a complex network of steel beams and columns forming the structure. Several construction workers in blue uniforms and hard hats are visible on the steel framework. A large yellow crane is positioned on the left side of the frame. The background shows a dense urban landscape with numerous buildings and a body of water with boats. The entire image is overlaid with a semi-transparent dark blue filter.

Construction & Site control

PROJECT LIFE CIRCLE



INVESTMENT
&
DEVELOPMENT



ARCHITECTURE
&
ENG. DESIGN



CONSTRUCTION
&
SITE CONTROL



OPERATION
&
MANAGEMENT

COTECCONS
TECCONS
TECCONS





HANOI NOI BAI INTERNATIONAL AIRPORT TERMINAL 2

SOW:
CONSTRUCTION OF THE MAIN
PASSENGER TERMINAL



Noi Bai Airport is one of Vietnam's two main air gateways and the second busiest airport in Vietnam with the capacity to handle over 20 million passengers annually.¹ It's a hub for VietJet Air, Vietnam Airlines, Jetstar Pacific, Cambodia, Angkor Air, and Bamboo Airways.

Direct flights between Noi Bai and airports in America are not available. American travelers will need to fly into Hanoi via Asian hubs like Singapore's Changi Airport, Bangkok's Suvarnabhumi Airport, and Hong Kong's Chek Lap Kok Airport.

WASKITA

KAA



RYA



TERMINAL I JUANDA INTERNATIONAL AIRPORT

SOW:

STRUCTURE, ARCHITECTURE, MECHANICAL
ELECTRICAL PLUMBING), CARGO TERMINAL
BUILDING, GATE HOUSE, CANOPY ENTRANCE,
INCINERATOR, TX STATION, REST HOUSE,
CONTAINER STORAGE, BUILDING FOR DRAINAGE



Juanda International Airport, is an international airport located in Sedati, Sidoarjo. It is now the third busiest airport in Indonesia (after Soekarno-Hatta and Ngurah Rai airport). This airport is located approximately 12 kilometers (7.5 mi) from Downtown Surabaya and serves the Surabaya metropolitan area, the metropolitan area of Surabaya plus extended urban area. Juanda International Airport is operated by PT Angkasa Pura I. The airport takes its name after Djuanda Kartawidjaja (1911–1963), the last Prime Minister of Indonesia who had suggested development of this airport. In 2019, the airport served about 500 aircraft per day.

SURABAYA, EAST JAVA



TERMINAL I JUANDA INTERNATIONAL AIRPORT

Sepinggan International Airport

SOW:
STRUCTURE,
ARCHITECTURE,
MECHANICAL
ELECTRICAL
PLUMBING



Sultan Aji Muhammad Sulaiman Sepingga International Airport, formerly named as Sepingga Airport, is an international airport serving the city of Balikpapan and adjacent areas of East Kalimantan, located in Kalimantan, Indonesia. The airport began its new operational phase on 6 August 1997, with a new building and runway structure, replacing the old structure on the same site. The airport is operated by PT. Angkasa Pura I, which has an area of 300 hectares (740 acres).



sti **Ngurah Rai** INTERNATIONAL AIR



Terminal Domestic at Ngurah Rai Airport

SOW:
PASSENGER TERMINAL
(STRUCTURE,
ARCHITECTURE,
MECHANICAL
ELECTRICAL PLUMBING)



I Gusti Ngurah Rai International Airport, known as Denpasar International Airport, is the main airport of Bali, Indonesia. Located 13 kilometres (8.1 mi) from Downtown Denpasar, serves the Denpasar metropolitan area and the Bali island. Ngurah Rai is the second busiest airport in Indonesia after Soekarno-Hatta, Ngurah Rai is one of the most popular island destination hubs in Asia. In 2018, the airport served 23,779,178 passengers.



Terminal 3 at Soekarno Hatta Airport

SOW:
PASSENGER TERMINAL
(STRUCTURE,
ARCHITECTURE,
MECHANICAL
ELECTRICAL PLUMBING)



The main challenges of the project include long-span steel structures, coordination with specialized airport services and working within the vicinity of live airport airside and landside operations and facilities. AECOM has also recommended common services tunnel (CST) and subsequent services coordination, as well as provided advice for the entire project in order to enhance distribution efficiency of utility services.



Terminal in Ahmad Yani International Airport

SOW:
PASSENGER TERMINAL
(STRUCTURE, ARCHITECTURE,
MECHANICAL ELECTRICAL PLUMBING),
SERVICE ROAD, GSE ROAD, POWER HOUSE,
STP, APRON



Jenderal Ahmad Yani International Airport is an airport that serves the city of Semarang, in Central Java, Indonesia. The airport is named in honor of Ahmad Yani (1922–1965), who is a National Hero of Indonesia. As of 2018, it was one of the fastest-growing airports in the world by growth percentage.[1] It became an international airport with the first flight of Garuda Indonesia to Singapore in August 2004. The airport is operated by PT Angkasa Pura I, a state enterprise of the Indonesian Ministry of Transport that manages airports in the eastern part of the country.



Terminal Minangkabau International Airport

SOW:
PASSENGER TERMINAL
(STRUCTURE,
ARCHITECTURE,
MECHANICAL
ELECTRICAL PLUMBING)



Minangkabau International Airport is the principal airport serving the province of West Sumatra on the island of Sumatra, Indonesia. It is located at Ketaping, Padang Pariaman Regency which is about 23 km north-west of Padang city center. The airport became operational in July 2005, replacing the old Tabing Airport in Padang. The airport is named after the Minangkabau ethnic group who inhabit the region.

Expertise Fields



Juanda
International
Airport



PASSENGER TERMINAL
(STRUCTURE,
ARCHITECTURE,
MECHANICAL
ELECTRICAL PLUMBING)

Terminal at Husein
Sastranegara
Airport



PASSENGER TERMINAL
(STRUCTURE,
ARCHITECTURE,
MECHANICAL
ELECTRICAL PLUMBING)

Terminal at Depati
Amir Airport



PASSENGER
TERMINAL
(STRUCTURE,
ARCHITECTURE,
MECHANICAL
ELECTRICAL
PLUMBING)

Juanda
International
Airport



PASSENGER TERMINAL
(STRUCTURE,
ARCHITECTURE,
MECHANICAL ELECTRICAL
PLUMBING), PARKING
AREA

Suai
Airport



PASSENGER TERMINAL
(STRUCTURE,ARCHITECTURE,
MECHANICAL ELECTRICAL
PLUMBING), SERVICE ROAD,
GSE ROAD, POWER HOUSE, STP,
APRON, TAXIWAY, RUNWAY

Soekarno Hatta
International
Airport



LANDSCAPE WORKS
(STRUCTURE,
ARCHITECTURE,
MECHANICAL ELECTRICAL
PLUMBING)

OR
H
PLUS





PALAU INTERNATIONAL AIRPORT



SOW:
FABRICATION OF STEEL STRUCTURES



Roman Tmetuchl International Airport, also known as Palau International Airport is the main airport of Palau. It is located near the former capital Koror, just north of Ngetkib, Airai on Babeldaob island. The airport is 4 miles (6 km) from Koror and 15 miles (25 km) from Ngerulmud.



NADZAB AIRPORT



SOW:
FABRICATION OF STEEL STRUCTURES



Nadzab Airport is situated in the suburban area of Lae city, the capital of Morobe province, which has the second largest population in PNG. The Nadzab Airport handles the second largest air passenger traffic and cargoes after Port Moresby's Jackson's Airport. Since its existing facilities requires large-scale improvements from capacity and safety perspectives, The Government of Papua New Guinea (PNG) formally requested The Government of Japan for assistance to rehabilitate the Airport.

Company details.

CONSULTANCY COMPANY'S NAME

PLADCO & PARTNERS

HQ ADDRESS

8th Floor, Grand Tower, 4250 King Fahad Road,
8428 AlMohammadiyah District, Riyadh 12363,
Kingdom of Saudi Arabia

COMPANY LANDLINE NUMBER

+966 11 288 66 77

COMPANY MOBILE NUMBER

+966 505 36 45 98

COMPANY EMAIL ADDRESS

contact@pladco.com