

STADIUMS



PROFILING

Letter of introduction

THE KINGDOM OF
SAUDI ARABIA

Joining forces to strengthen competitiveness

Firms that join forces are the foundations of innovation, especially high-tech design and construction related companies, which are frequently at the vanguard of pioneering research and technology.

The group coordination is a cooperative effort among various entities with different specialities to assure coherence in achieving common objectives and ensuring areas of need to focus the efforts and increase the success ratio by far.

PLADCO's principal mission is to orchestrate the collaborative efforts of its international team to support market growth in the Kingdom of Saudi Arabia. Codinachs Network main role is establishing strategic partnerships between PLADCO and proficient contractors and specialist consultants for their forthcoming projects in Saudi Arabia.



Our approach

PASSIONATE

Passion is the fuel that keeps us going. Perseverance and hard work is our key predictor of success.

SYNERGIES

Introducing the cluster cooperation system, we cut time to handover thanks to the team synergies and integration which led to joint success and better results.

International Consultancy

WITH LOCAL APPROACH

COORDINATED METHODOLOGY

The main advantage of implementing a coordinated work methodology is that it brings together the expertise and insight of each entity, in an attempt to establish a strategic approach for the coming years.

EFFICIENCY

The aim of our development strategy is to strengthen competitiveness of services by enhancing productivity of the related companies and organizations selected in the group.

Project Life Cycle

DESIGN PHASES



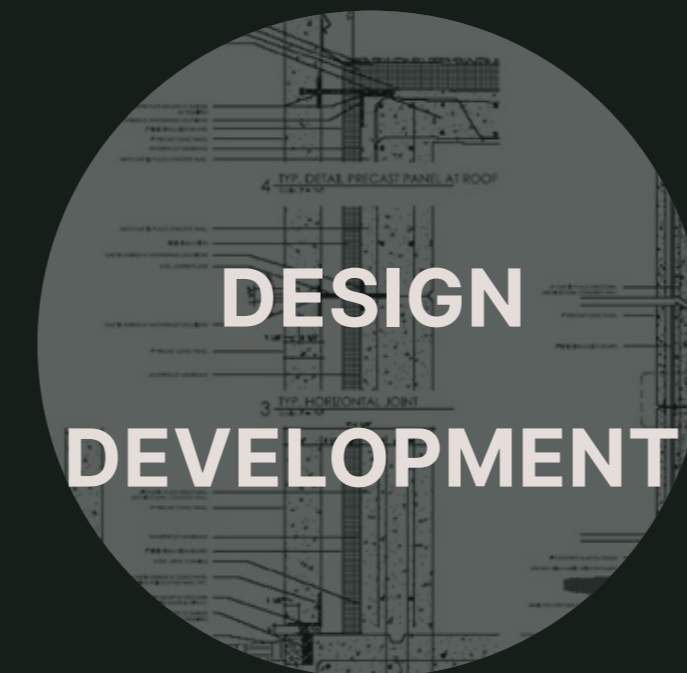
**PLANNING/
BID**



**CONCEPTUAL
DESIGN**



**SCHEMATIC
DESIGN**



**DESIGN
DEVELOPMENT**



**CONSTRUCTION
DOCUMENTS**



CONSTRUCTION



OPERATION

CONTENTS OF DELIVERABLES

- Bid Protocols
- Bid Standards
- Bid Templates
- Families Library

- Façade Approach
- Program Analysis
- Area & Massing Studies
- Norm Analysis
- Environmental Analysis
- Base Of Design

- Façade Definition
- STR Definition
- Area Definition
- LEED Evaluation
- Cost Estimation By Ratios

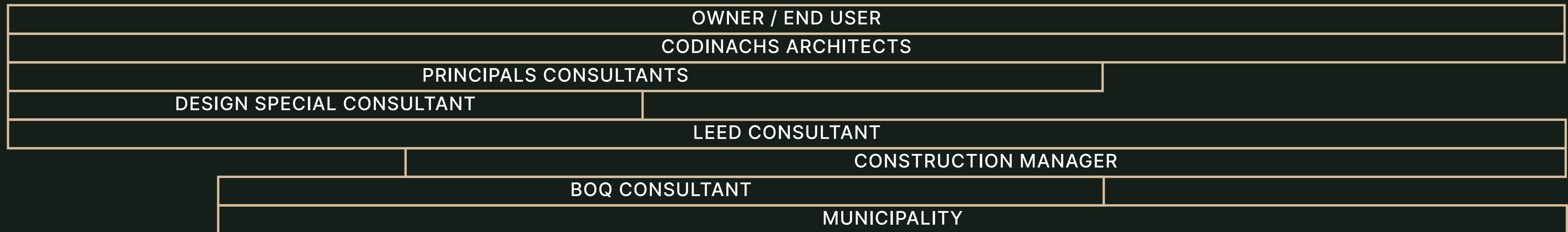
- Final Architecture
- Design
- LEED Details Analysis
- Preliminary Specs
- Cost Estimation
- Final Design
- 100% Coordinate

- Construction Definition
- Specifications
- Final BOQ

- As Built Model
- 4D Programming
- 5D Cost Estimation

- Operation Model
- Maintenance
- Building Documents

ACTORS & INTERFACES



PLADCO

BRIEF

PLADCO provides comprehensive EPC services for projects in various industries including oil and gas, petrochemical, energy, and water treatment. Their experienced team offers full project management support from initial planning and design to construction and commissioning.

Through our EPC services, PLADCO ensures timely and cost-effective project delivery while maintaining the highest standards of safety and quality.

PLADCO is well-recognized among the leaders in the fields of oil, gas, petrochemicals, mining, power, water, marine, ICT, security, safety, defense, aerospace, infrastructure, urban, environment and investment sectors.

25,000+
EMPLOYEES

1,000+
WORLDWIDE CLIENTS

10,000+
WORLDWIDE COMPLETED PROJECTS

ANNUAL TURNOVER
PLADCO \$ 5.7B
MAIN ENG. & ARCH. JV PARTNER \$ 65M
MAIN CONSTRUCTION JV PARTNER \$ 1.1B



HQ_ THE KINGDOM
OF SAUDI ARABIA

ASSOCIATED COMPANIES:



Kawn Environmental Services

KAWN



Gulf Ababeel

Management Board



DR. AMIN MOHAMMED ABDULLAH ALSHANQITI

Businessman, Investor & Proprietor



MR. Hamad Saad AlOmar

Board Member



DR. SAMER ALHAMMAD

Board Member



MR. Basim Hussain

Board Member



MR. HENDRA UTOMO

Director of Business
Administration and Contracting



MR. AHMED ALSHANQITI

Board Member

Expertise Fields



Consultancy



EPC



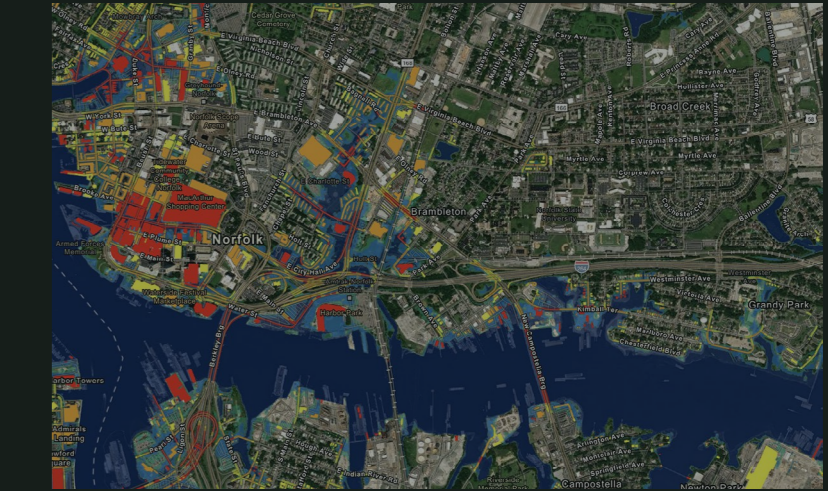
Investment



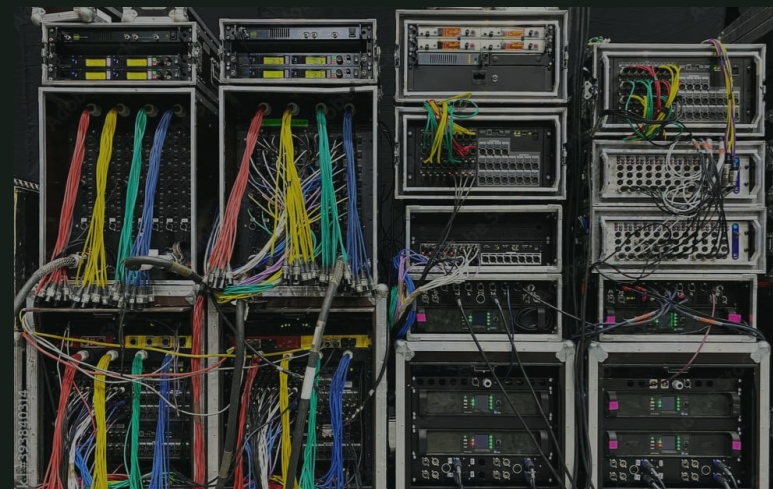
Logistics



Manufacturing



GIS



MEP/
Low Current



Petrochemical



Mining



Renewable
energy



Solar



Smart
Cities

EPC

Engineering



Procurement



Construction



ISO Certificates



Certificate of Registration
This is to certify that
PLANNING & DEVELOPMENT CO. LTD.



AT
AL SAFWA CENTRE, AL SULAYMANIYAH DISTRICT,
RIYADH 11575 KINGDOM OF SAUDI ARABIA

has been assessed and certified by Vatsin Certification as meeting the requirements of

ISO 45001:2018
(Occupational Health & Safety Management System)

For the following activities
ENGINEERING, PROCUREMENT AND CONSTRUCTIONS (EPC) CONTRACTOR, CONSULTANCY SERVICE PROVIDER, INSPECTION, REPAIR, INSTALLATIONS, RENOVATION, OPERATION AND MAINTENANCE CONTRACTOR FOR: INFRASTRUCTURE AND SUPERSTRUCTURES PROJECTS: AIRPORTS & AIRPORTS FACILITIES, HIGHWAYS, TUNNELS, BRIDGES, ROADS, STREETS, WALKWAYS, BULK HOUSING, HIGH RISE BUILDINGS, MARINES, RESIDENTIAL & COMMERCIAL BUILDINGS, CIVIL AND ELECTROMECHANICAL WORKS, HEATING SYSTEMS, SOLAR SYSTEMS, SANITARY WARE, REFRIGERATION & AIR CONDITIONING SYSTEMS AND PIPING WORKS, DATA CENTERS, TELECOMMUNICATIONS AND ICT PROJECTS

IAF CODE - 28 & 34
Certificate No : VC23031940

To verify this certificate please visit at www.vatsincertification.com

Date of Initial Registration : 12-09-2024 Revision No. : 00
Re-Certification Due : 11-09-2027 1st Surveillance : 11-09-2025
2nd Surveillance : 11-09-2026 Certificate Expiry : 11-09-2027






VATSIN CERTIFICATION PRIVATE LIMITED
Accredited by IAS (International Accreditation Services, Inc.)
3060 Saturn Street, Suite 100, Brea, California 92821 United States of America

* Validity of the Certificate is subject to successful completion of surveillance audits on or before of due date. (In case Surveillance audit is not allowed to be conducted, this certificate shall be suspended/annulled)
* Certificate is the Property of VATSIN CERTIFICATION and shall be returned immediately when demanded.
* E-mail : info@vatsincertification.com Website : www.vatsincertification.com



Certificate of Registration
This is to certify that
PLANNING & DEVELOPMENT CO. LTD.



AT
AL SAFWA CENTRE, AL SULAYMANIYAH DISTRICT,
RIYADH 11575 KINGDOM OF SAUDI ARABIA

has been assessed and certified by Vatsin Certification as meeting the requirements of

ISO 14001:2015
(Environmental Management System)

For the following activities
ENGINEERING, PROCUREMENT AND CONSTRUCTIONS (EPC) CONTRACTOR, CONSULTANCY SERVICE PROVIDER, INSPECTION, REPAIR, INSTALLATIONS, RENOVATION, OPERATION AND MAINTENANCE CONTRACTOR FOR: INFRASTRUCTURE AND SUPERSTRUCTURES PROJECTS: AIRPORTS & AIRPORTS FACILITIES, HIGHWAYS, TUNNELS, BRIDGES, ROADS, STREETS, WALKWAYS, BULK HOUSING, HIGH RISE BUILDINGS, MARINES, RESIDENTIAL & COMMERCIAL BUILDINGS, CIVIL AND ELECTROMECHANICAL WORKS, HEATING SYSTEMS, SOLAR SYSTEMS, SANITARY WARE, REFRIGERATION & AIR CONDITIONING SYSTEMS AND PIPING WORKS, DATA CENTERS, TELECOMMUNICATIONS AND ICT PROJECTS

IAF CODE - 28 & 34
Certificate No : VC23028301

To verify this certificate please visit at www.vatsincertification.com

Date of Initial Registration : 12-09-2024 Revision No. : 00
Re-Certification Due : 11-09-2027 1st Surveillance : 11-09-2025
2nd Surveillance : 11-09-2026 Certificate Expiry : 11-09-2027






VATSIN CERTIFICATION PRIVATE LIMITED
Accredited by IAS (International Accreditation Services, Inc.)
3060 Saturn Street, Suite 100, Brea, California 92821 United States of America

* Validity of the Certificate is subject to successful completion of surveillance audits on or before of due date. (In case Surveillance audit is not allowed to be conducted, this certificate shall be suspended/annulled)
* Certificate is the Property of VATSIN CERTIFICATION and shall be returned immediately when demanded.
* E-mail : info@vatsincertification.com Website : www.vatsincertification.com



Certificate of Registration
This is to certify that
PLANNING & DEVELOPMENT CO. LTD.



AT
AL SAFWA CENTRE, AL SULAYMANIYAH DISTRICT,
RIYADH 11575 KINGDOM OF SAUDI ARABIA

has been assessed and certified by Vatsin Certification as meeting the requirements of

ISO 9001:2015
(Quality Management System)

For the following activities
ENGINEERING, PROCUREMENT AND CONSTRUCTIONS (EPC) CONTRACTOR, CONSULTANCY SERVICE PROVIDER, INSPECTION, REPAIR, INSTALLATIONS, RENOVATION, OPERATION AND MAINTENANCE CONTRACTOR FOR: INFRASTRUCTURE AND SUPERSTRUCTURES PROJECTS: AIRPORTS & AIRPORTS FACILITIES, HIGHWAYS, TUNNELS, BRIDGES, ROADS, STREETS, WALKWAYS, BULK HOUSING, HIGH RISE BUILDINGS, MARINES, RESIDENTIAL & COMMERCIAL BUILDINGS, CIVIL AND ELECTROMECHANICAL WORKS, HEATING SYSTEMS, SOLAR SYSTEMS, SANITARY WARE, REFRIGERATION & AIR CONDITIONING SYSTEMS AND PIPING WORKS, DATA CENTERS, TELECOMMUNICATIONS AND ICT PROJECTS

IAF CODE - 28 & 34
Certificate No : VC23017911

To verify this certificate please visit at www.vatsincertification.com

Date of Initial Registration : 12-09-2024 Revision No. : 00
Re-Certification Due : 11-09-2027 1st Surveillance : 11-09-2025
2nd Surveillance : 11-09-2026 Certificate Expiry : 11-09-2027

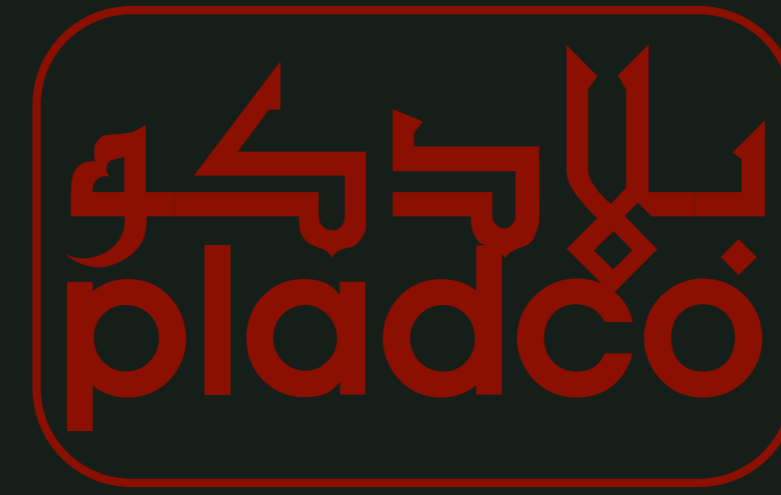





VATSIN CERTIFICATION PRIVATE LIMITED
Accredited by IAS (International Accreditation Services, Inc.)
3060 Saturn Street, Suite 100, Brea, California 92821 United States of America

* Validity of the Certificate is subject to successful completion of surveillance audits on or before of due date. (In case Surveillance audit is not allowed to be conducted, this certificate shall be suspended/annulled)
* Certificate is the Property of VATSIN CERTIFICATION and shall be returned immediately when demanded.
* E-mail : info@vatsincertification.com Website : www.vatsincertification.com

Main JV Partners



A&M



GLOBAL BUSINESS
CONSULTANT

<https://www.alvarezandmarsal.com/es>

SHINE WING



AUDIT AND ASSURANCE,
TAX, ADVISORY AND
BUSINESS SERVICES

<https://www.shinewing.hk/>

DTECH



TECHNOLOGIES
DESIGN

<https://www.deployedtech.com/>

Main JV Partners Profile

ALVAREZ

&



MARSAL

Introduction

BRIEF

Uncover and implement the right solution, at the right time, in the right way. A&M provides global leadership, problem solving and value creation for companies across industries and around the world. We work as advisers, interim leaders and partners who tell you what you need to know, not always what you want to hear.

A&M IS A CONSULTING FIRM KNOWN FOR ASKING TOUGH QUESTIONS, LISTENING WELL, DIGGING IN AND ROLLING UP OUR SLEEVES SINCE 1983

20,000+
ENGAGEMENTS

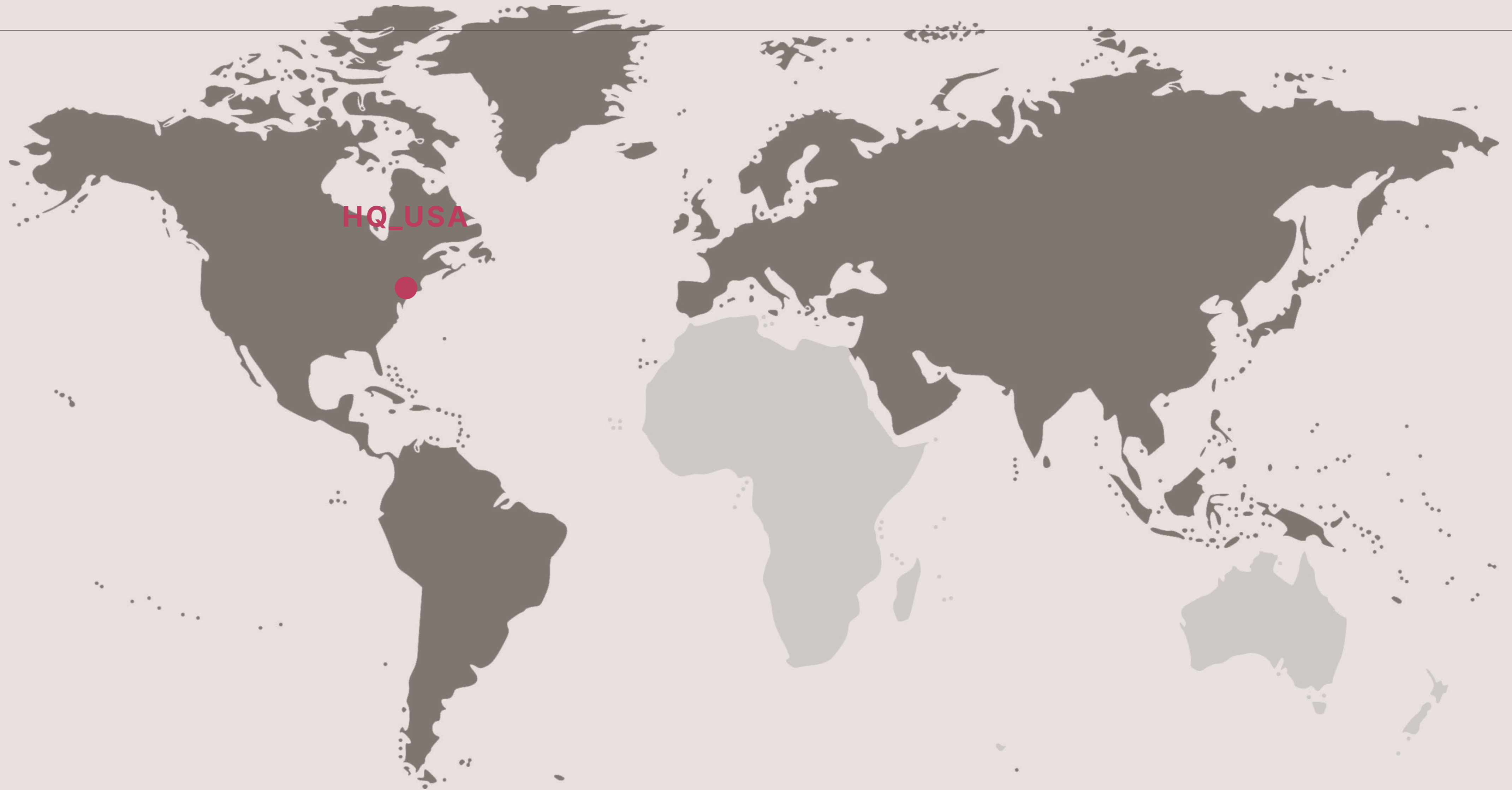
4
CONTINENTS

65+
OFFICES

35+
YEARS

INTERNATIONAL EXPERIENCE

AUSTRALIA, AUSTRIA, BENELUX, BRAZIL, CANADA, CAYMAN ISLANDS, CHINA, COLOMBIA, CZECH REPUBLIC, FINLAND, FRANCE, GERMANY, GREECE, INDIA, INDONESIA, IRELAND, ITALY, KOREA, MALAYSIA, MEXICO, NORWAY, POLAND, PORTUGAL, SAUDI ARABIA, SINGAPORE, SPAIN, SWEDEN, SWITZERLAND, UKRAINE, UNITED ARAB EMIRATES, UNITED KINGDOM, UNITED STATES, UZBEKISTAN, VIETNAM.



Expertise Fields

Strategy Execution



We offer creative solutions to help companies execute winning strategies. Our implementation experts help organizations accelerate execution to achieve longterm performance improvement and measurable, bottom-line results.

Performance Improvement



We partner with companies to drive significant, sustainable business performance improvement across their operations by seizing the right growth opportunities and improving profitability in the face of top and bottom-line challenges.

Interim Management, Restructuring & Turnaround



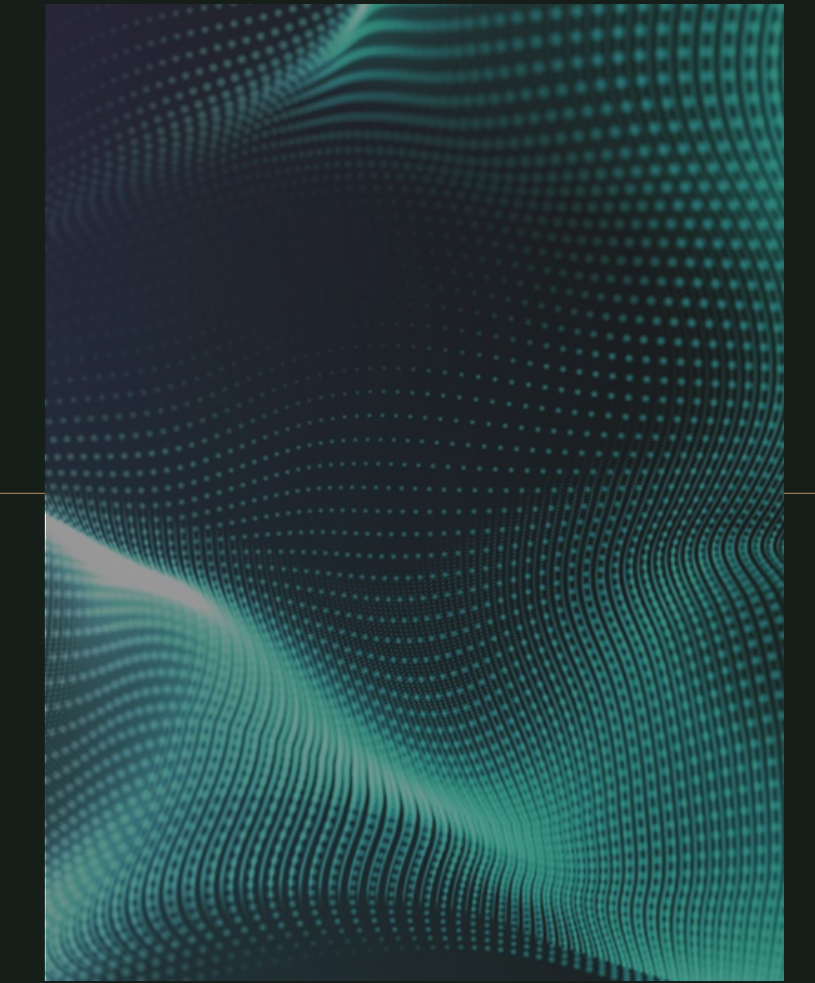
We partner with companies to drive significant, sustainable business performance improvement across their operations by seizing the right growth opportunities and improving profitability in the face of top and bottom-line challenges.

Transaction Services



We combine our firm's deep operational, industry and functional resources to robustly and critically assess assets and develop a roadmap for value creation leading to sale or IPO

Disputes & Investigations



We are trusted partners for business investigations, litigation consulting, accounting crises, forensic technology and expert testimony.

Consulting Services

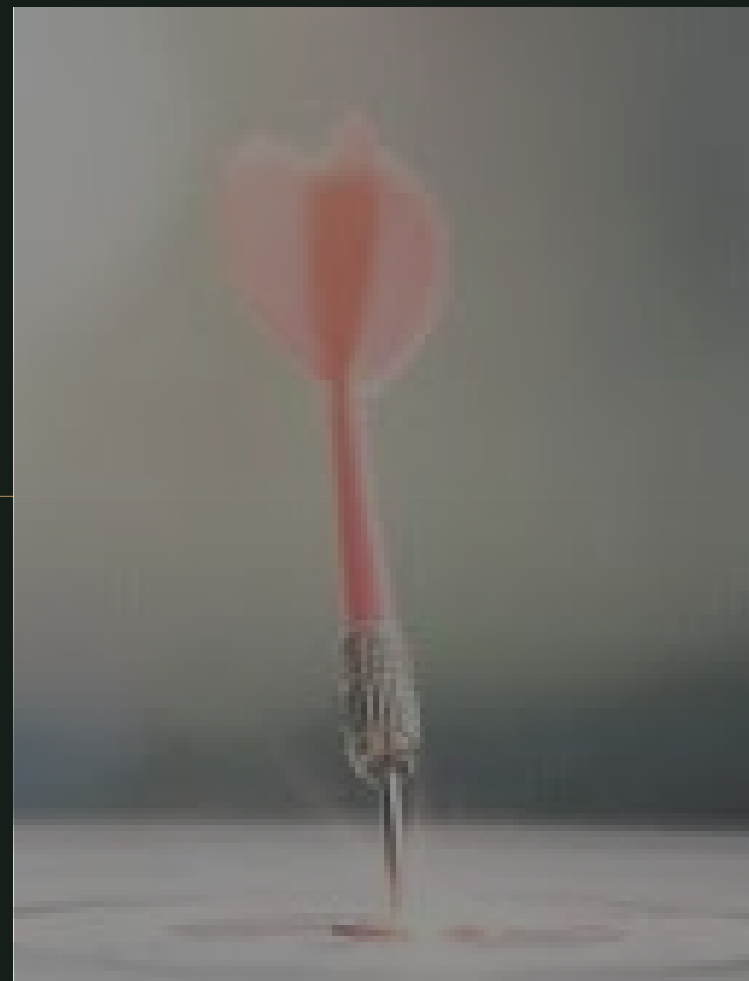


Multi-faceted Projects



Expertise Fields

Corporate Performance Improvement



- CFO SERVICES
- CORPORATE ESG SERVICES
- CORPORATE M&A SERVICES
- CORPORATE TRANSFORMATION
- DIGITAL & TECHNOLOGY SERVICES
- SUPPLY CHAIN SERVICES
- TALENT, ORGANIZATION & PEOPLE

Digital



- DIGITAL GROWTH AND INNOVATION
- DIGITAL TALENT AND CULTURE
- DATA & ARTIFICIAL INTELLIGENCE
- DIGITAL CUSTOMER EXPERIENCES
- DIGITAL PLATFORMS

Disputes and Investigations



- RIGOROUS FINANCIAL AND ECONOMIC INVESTIGATIONS & COMPLIANCE
- FORENSIC TECHNOLOGY
- GLOBAL CYBER RISK SERVICES | GCRS®
- ECONOMIC CONSULTING

Environmental, Social & Governance



- ENVIRONMENTAL APPROACH
- A&M' ASSOCIATES VALUE
- DIVERSITY AND INCLUSION
- EMPLOYEE INVOLVEMENT
- COMMUNITY ENGAGEMENT
- COMPLIANCE AND ETHICS

Private Equity Services



- A&M DATA INTELLIGENCE
- A&M GLOBAL TRANSACTION
- DIVESTITURE SERVICES
- GLOBAL TRANSACTION
- INTEGRATED DUE DILIGENCE
- PRIVATE EQUITY PERFORMANCE

Expertise Fields

Regulatory & Risk Advisory



- BANKING
- CORPORATE RISK MANAGEMENT
- DIVERSIFIED FINANCIALS
- GLOBAL CYBER RISK SERVICES
- INSURANCE REGULATORY
- PRIVACY & DATA COMPLIANCE SERVICES

Restructuring & Turnaround



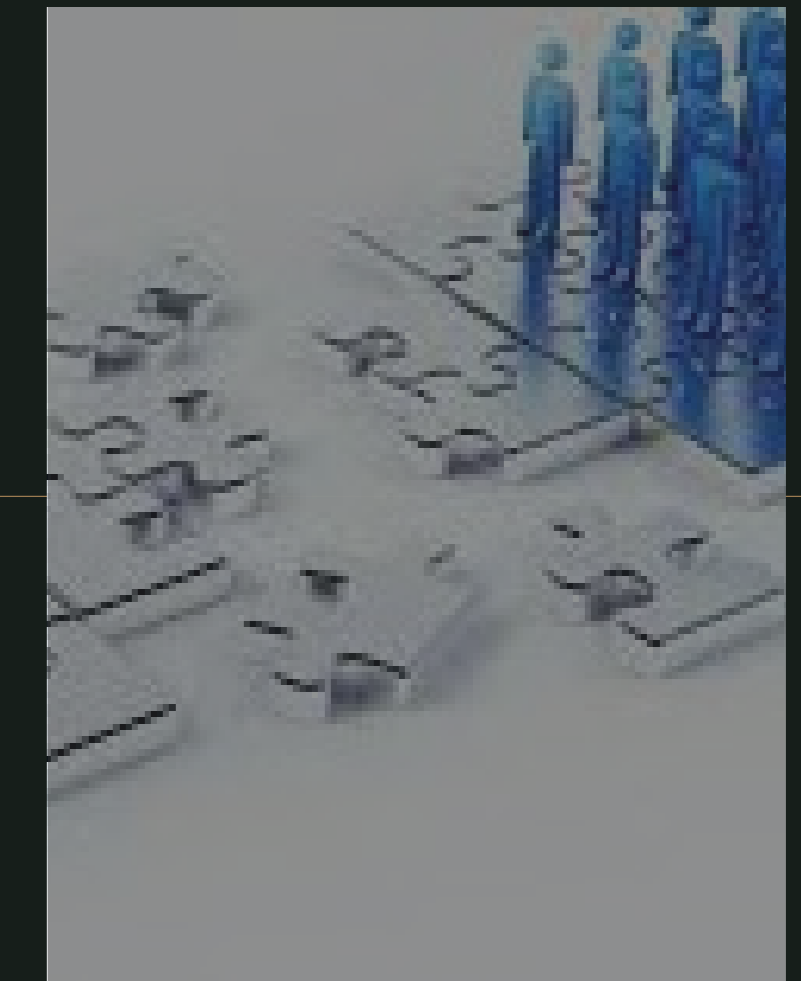
- CASE MANAGEMENT SERVICES
- CORPORATE FINANCE
- DEBT ADVISORY
- FIDUCIARY SERVICES
- INSOLVENCY
- LENDER ADVISORY
- RESTRUCTURING ADVISORY

Tax



- FEDERAL TAX
- STATE AND LOCAL TAX
- INTERNATIONAL TAX
- GLOBAL TRANSACTION TAX ADVISORY
- INCOME TAX ACCOUNTING
- SALES AND USE
- TRANSFER PRICING

Valuation



- BUSINESS MODELING & ANALYTICS
- COMPLEX FINANCIAL INSTRUMENTS
- DIVORCE SERVICES
- FINANCIAL & TAX REPORTING
- LITIGATION & DISPUTE VALUATION
- PORTFOLIO VALUATION
- STRUCTURED FINANCE



Industries

SERVICE

BUSINESS SERVICES
CONSUMER PRODUCTS
EDUCATION
ENVIRONMENTAL DISPUTES
FINANCIAL SERVICES
PUBLIC SECTOR SERVICES
TRAVEL, HOSPITALITY AND LEISURE

HEALTH & CARE

HEALTHCARE
PHARMACEUTICALS

TECHNOLOGY

ENERGY
MEDIA & ENTERTAINMENT
SOFTWARE, TECHNOLOGY & SERVICES
TELECOMMUNICATIONS

INDUSTRIAL

AEROSPACE, DEFENSE, AVIATION & SPACE
AUTOMOTIVE & INDUSTRIALS
INFRASTRUCTURE & CAPITAL PROJECTS
REAL ESTATE
RETAIL
TRANSPORTATION & LOGISTICS

Management Board



MR. TONY ALVAREZ

CHIEF EXECUTIVE AND FOUNDER



MR. BRYAN MARSAL

CHIEF EXECUTIVE AND FOUNDER



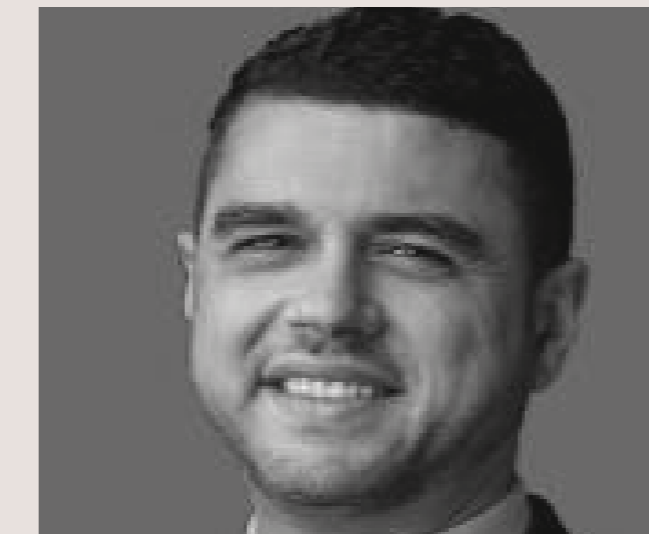
MR. PAUL GILBERT

MANAGING DIRECTOR



MR. MATTHEW PALMER

MANAGING DIRECTOR



MR. PIETRO CASTRONOVO

MANAGING DIRECTOR



MR. ALI ANWAR

MANAGING DIRECTOR

GLOBAL AWARDS

“TURNAROUND FIRM OF THE YEAR”



SPECIALIST ADVISER OF THE YEAR”



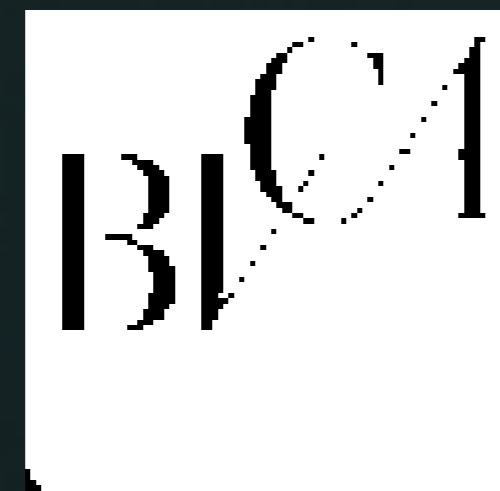
“GLOBAL TURNAROUND CONSULTING FIRM OF THE YEAR”



RANKED #11 CONSULTING FIRM IN NORTH AMERICA,
#8 EUROPE AND #8 IN ASIA



MULTIPLE AWARDS FOR “TURNAROUND OF THE YEAR”



“M&A DEAL OF THE YEAR”



Clients in the region & Prestigious Clients



SHINE

WMI

NG



Introduction

BRIEF

SW is a fast-expanding professional services network of experts in key locations around the world. As the only extensive international network with deep roots in Asia Pacific, we are the gateway between one of the world's largest economies and the rest of the globe. With our experience in navigating intricate local markets, we thrive on creating transnational growth opportunities for both our clients and our people.

MATCHING GLOBAL PRESENCE

18
PRACTICE LEADERS

6
OFFICES

300+
PEOPLE

FORTUNE 500
CLIENT-SERVICING

MEMBER FIRMS
HONG KONG, SINGAPORE, AUSTRALIA, JAPAN, PAKISTAN,
EGYPT, MALAYSIA, UNITED KINGDOM, INDONESIA, THAILAND,
INDIA, TAIWAN, GERMANY, CHINA,
TURKEY

ASSOCIATE FIRM
MACAU

65+ FIRMS WORLDWIDE
WITH COMBINED REVENUE OF US\$6.38BN

SW AND PRAXITY'S PRESENCE AROUND THE WORLD:

SW INDIA THROUGH ITS EXPANDED
PRESENCE AND ITS PARTNERSHIP WITH
PRAXITY (AS AN ALLIANCE, MEMBER
FIRM) ACTS AS COMMON CONTACT FOR

ALL TAX RELATED GLOBAL COMPLIANCES.

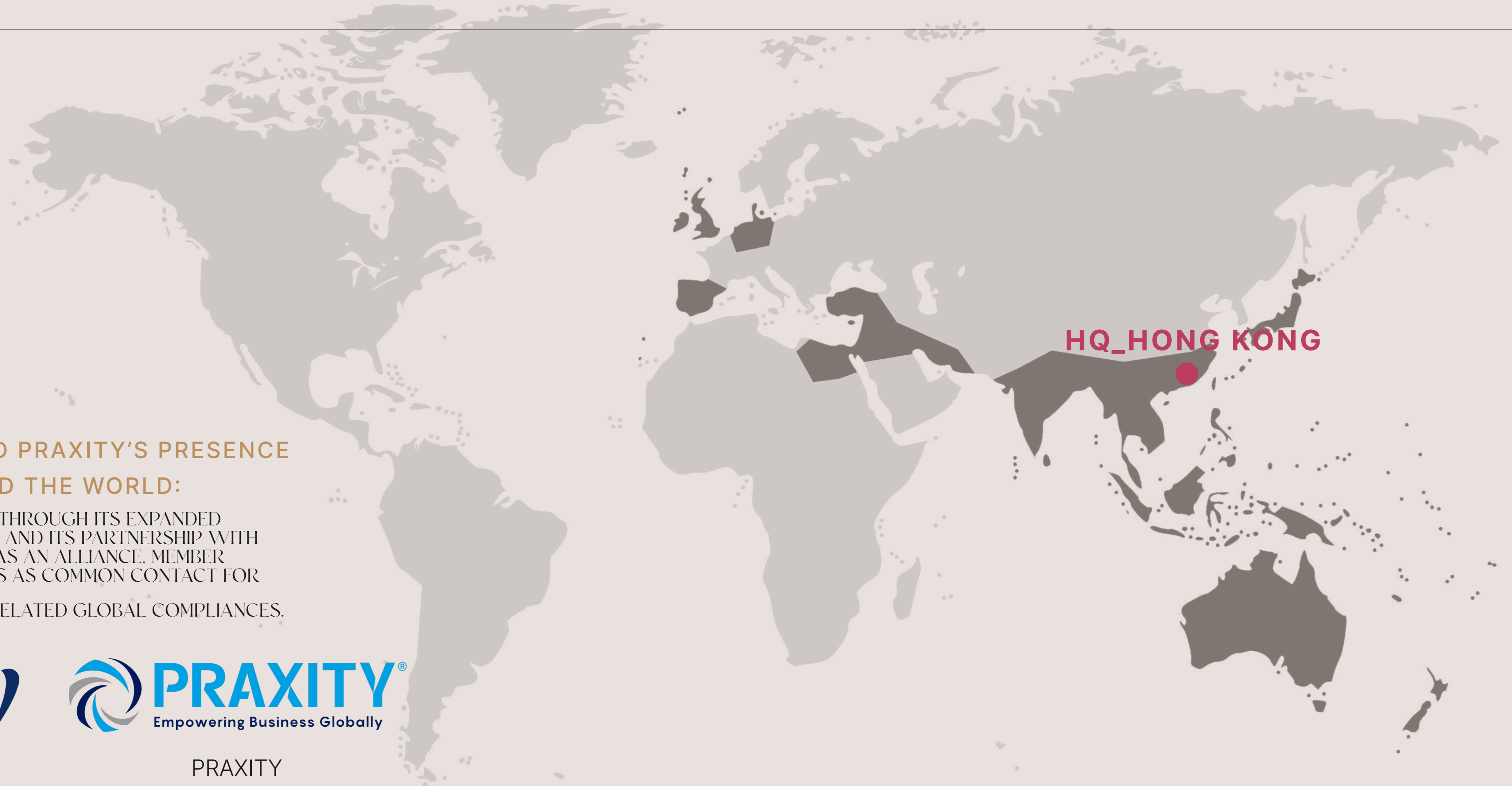


SW



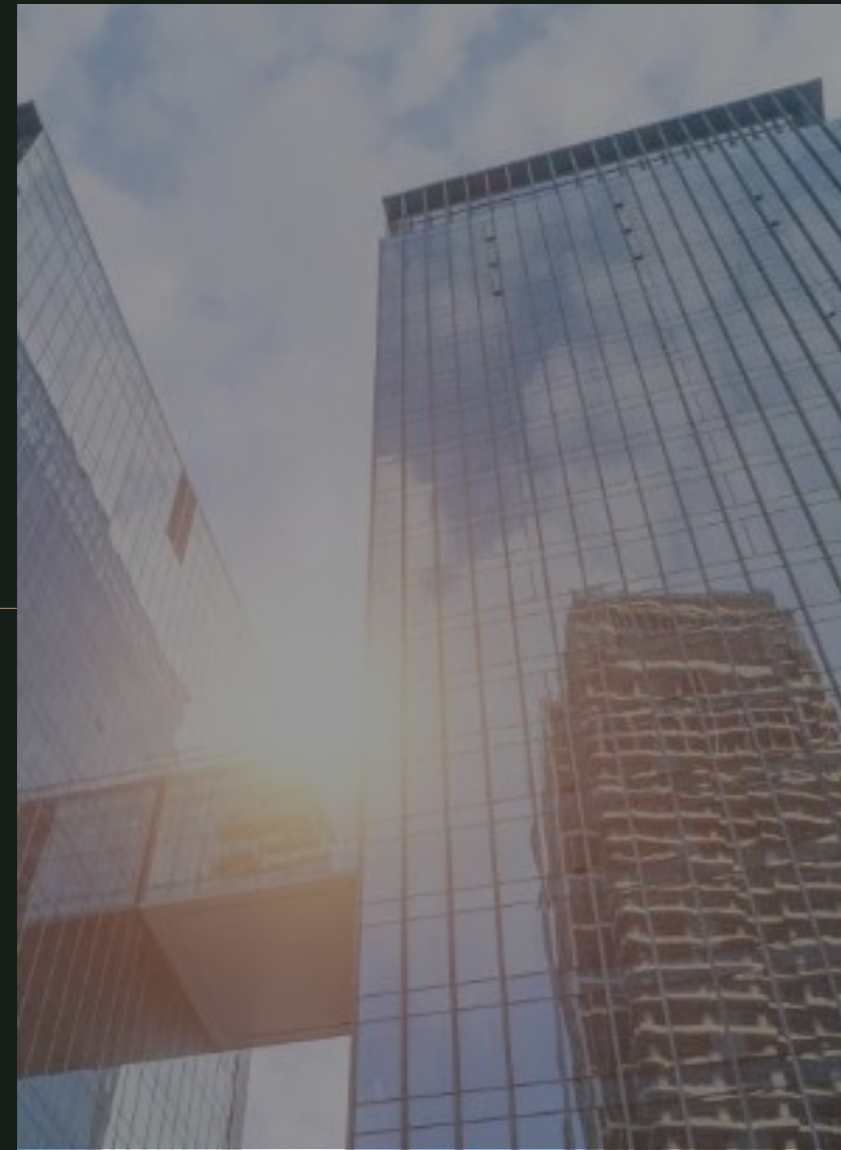
PRAXITY

HQ_HONG KONG



Expertise Fields

Audit and Assurance



ASSURANCE AND BUSINESS
ADVISORY SERVICES
INITIAL PUBLIC OFFERING
SERVICES

Tax



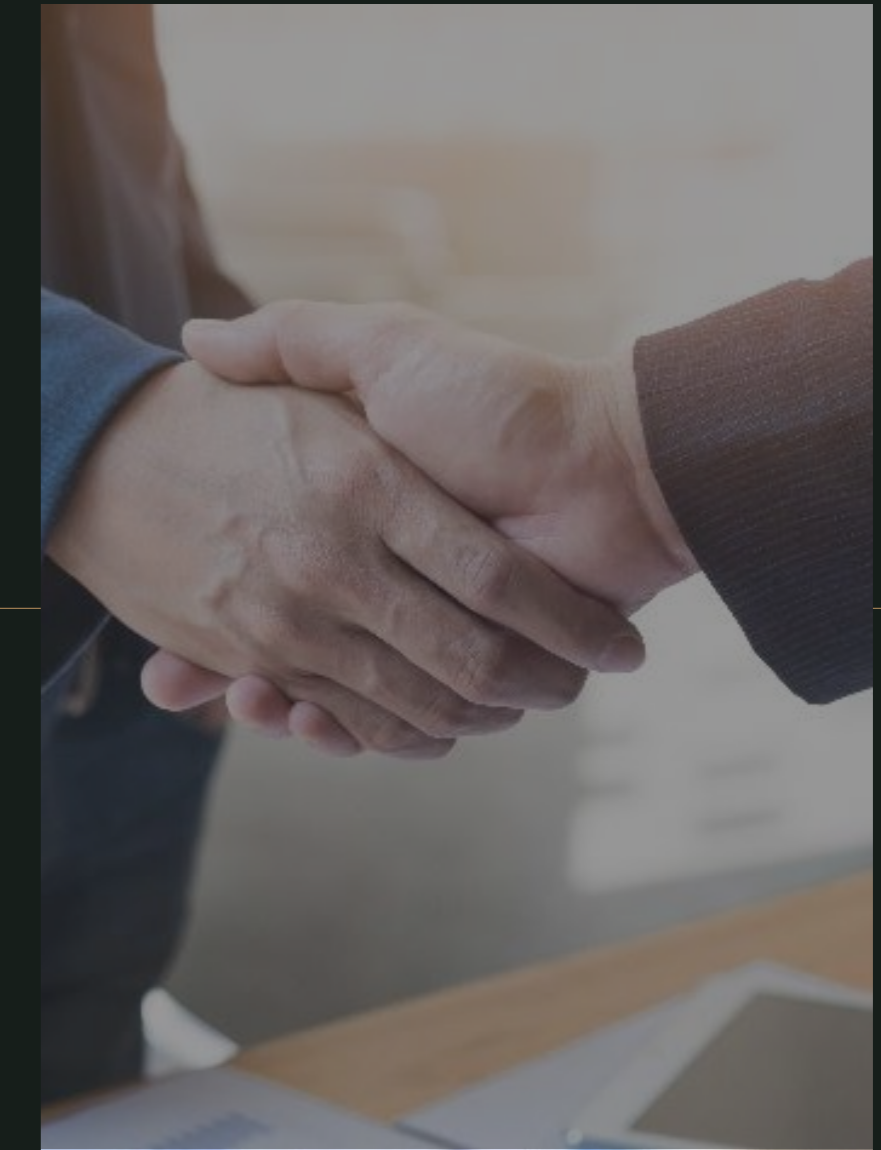
TAX AND BUSINESS
ADVISORY SERVICES

Advisory



REAL ESTATE AND TENANCY
EMPLOYMENT
INTELLECTUAL PROPERTY
LITIGATION & DISPUTE
RESOLUTION
THE SECURITIES AND FUTURES
COMMISSION REGULATION

Business Services



CORPORATE SECRETARIAL
SERVICES
BOOKKEEPING AND ACCOUNTING
SERVICES
TAX ADVISORY SERVICES
PAYROLL SERVICES

Industries



Automotive



Education



Finance



Manufacturing



Mining



Petrol
& Gas



Pharmaceuticals



Retail



Technology



Telecommunications



Transportation

**CONTINUOUS
COMMUNICATION**

IMPORTANCE TO CLIENT:
NO SURPRISES, EFFICIENT
PERFORMANCE AND
CONCLUSION OF THE TAX,
ASSURANCE, RISK ADVI-
SORY & INTERNAL AND
OUTSOURCING SERVICES.

IMPORTANCE TO CLIENT:
SERVICE, INSIGHTS AND
COMMUNICATION PROVIDED
BY OUR MOST APPROPRIATE
TEAM HAVING SUBJECT MATTER
EXPERTISE TO ENSURE WE MEET
CLIENT'S EXPECTATIONS.

RIGHT TEAM



Collaborative Approach

**EFFECTIVE
TECHNICAL
INTERACTION**

IMPORTANCE TO CLIENT:
TIMELY AND EFFECTIVE
IDENTIFICATION AND
RESOLUTION OF ISSUES.

IMPORTANCE TO CLIENT:
ACCESS TO AN INFORMED
"SOUNDING BOARD" FOR
DISCUSSING BUSINESS PLANS,
OUR CHALLENGES AND
OPPORTUNITIES.

RELEVANT INSIGHTS

CUSTOMIZED

MEASURED

CO-DEVELOPED

TRANSPARENT

KNOWLEDGE-RICH

QUALITY SERVICES

Management Board



MR. ATUL PURI

MANAGING PARTNER



MR. RAAKESH VISHWAKARMA

PARTNER



MR. NISHANT AGGARWAL

Director



MR. AMANDEEP SINGH OBEROI

Senior Manager



MR. DEEPAK AVASTHY

Manager



MR. SAURAV SOOD

Partner



MR. ANKUR GUPTA

Partner

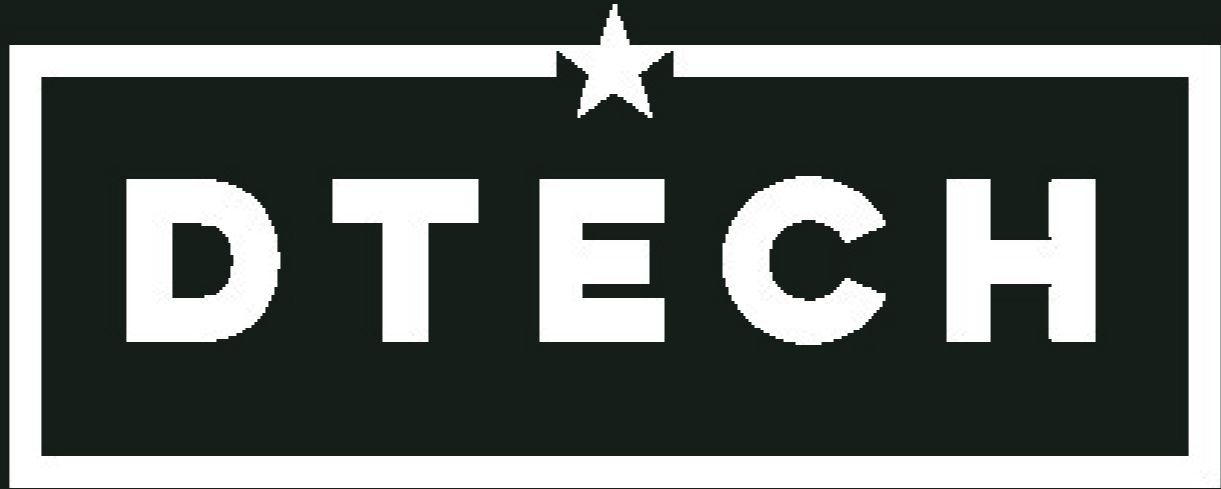
Selective Clients



DEEPLOYED

TECH

NOLOGIES



Introduction

BRIEF

Deployed Technologies (DTech) provides a unique combination of expert services, bespoke apps and specialized IT support for the hospitality industry.

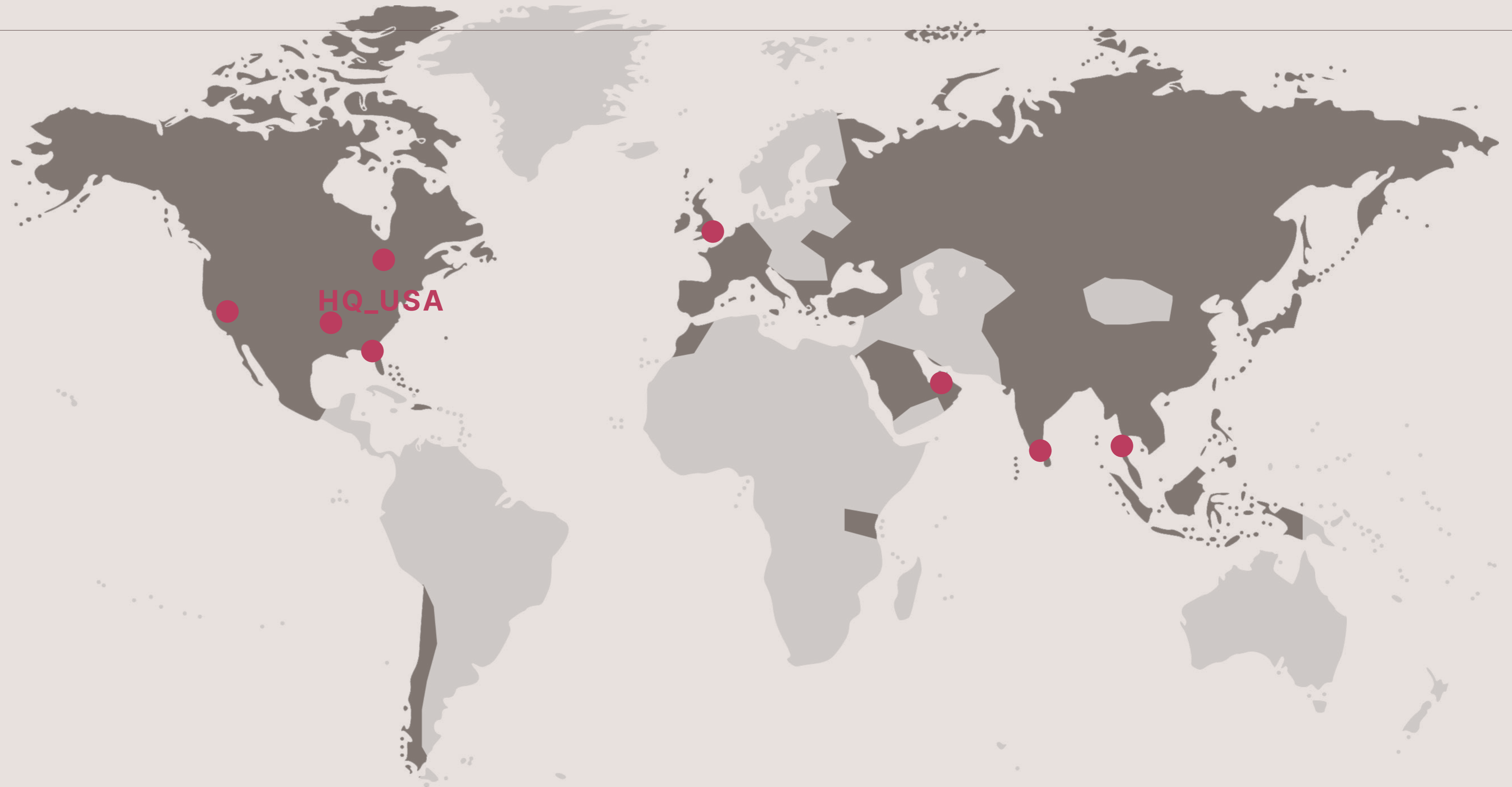
Delivered by a team of carefully selected industry experts, DTech offers a full range of professional services including active & passive infrastructure design, hotel opening services, virtual CIO / CTO engagements, security, compliance / performance assessments and network design / deployment.

A UNIQUE COMBINATION OF
EXPERT
SERVICES, BESPOKE APPS &
SPECIALIZED
IT SUPPORT FOR HOSPITALITY

50+
DTECH STAFF

HQ OFFICE IN US

BRANCH OFFICES IN US, UK, UAE, SRI LANKA,
AND THAILAND



Our Consulting Lifecycle

DESIGN

Concept design
Schematic Design
Detailed Design
Tender/ IFC Documents
STRA Report
Due diligence report
Design qa/ qc



OPENING PM

DTECH OPENING APP
Tech budget mgmt.
IT contracts
equipment spec.
Procurement
Timeline Planning
Vendor coordination



OVERSIGHT

Construction admin
Site Supervision
PROCUREMENT MGMT
Deployment Planning
MODEL ROOMS
RFI Coordination



DEPLOYMENT SUPERVISION

Network Infrastructure
Audio visual
Software systems/ Servers
AV, CCTV, AUTOMATION
Iptv and digital screens



Expertise Fields

Services



OPENING MANAGEMENT/CIO /
CTO OUTSOURCING/WIFI/
SECURITY & COMPLIANCE/
IT ASSESSMENTS/ LOW VOLTAGE
DESIGN/CONSTRUCTION ADMIN

APP



IT DEPARTMENT/HOTEL
OPENINGS/CRITICAL PATH/
PRE-OPENING BUDGETS/
CONTRACTS/BUSINESS
DEVELOPMENT/PUNCHING /
SNAGGING/
CUSTOM DEVELOPMENT

Support



REMOTE OR ON SITE/24 X 7 X 365/
FLEXIBLE COVERAGE/TAILORED
PRICING MODELS/ SECURITY/
MONITORING/
VENDOR MANAGEMENT/

SERVICE

HOTEL OPENING MANAGEMENT
TECH PROJECT COORDINATION
LOW VOLTAGE DESIGN
CIO / CTO OUTSOURCING
SECURITY & ASSESSMENTS
NETWORK DESIGN

APPLICATIONS

IT & COMPLIANCE MANAGEMENT
HOTEL OPENING MANAGEMENT
CONTRACT MANAGEMENT
CUSTOM DEVELOPMENT
BUSINESS DEVELOPMENT
PROJECT MANAGEMENT

Industries

SUPPORT

SUPPORT WHEN YOU NEED IT
SINGLE SUPPORT SOURCE
ON SITE OR REMOTE SUPPORT
MONITORING
VENDOR MANAGEMENT
MASS DEPLOYMENTS & ROLLOUTS

Management Board



MR. DARRIN HUBBARD

CEO



PETER CHAMBERS

PRESIDENT



TOM DOLASKIE

COO

SOUDAH DEVELOPMENT

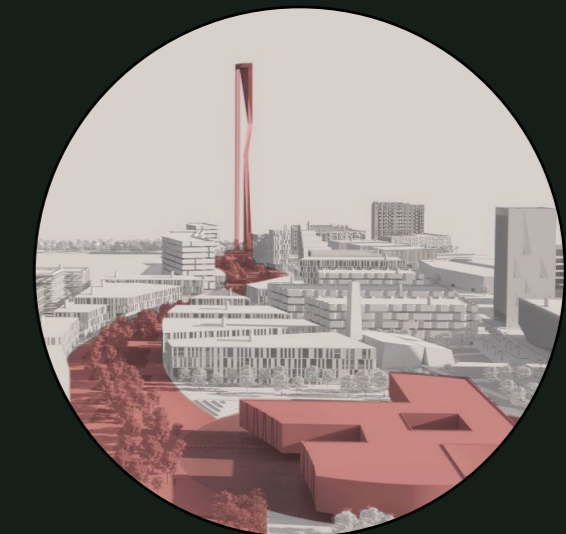


PROJECT TYPES

DESIGN SCOPE:

▶ SMART TECHNOLOGIES | BIOTECHNOLOGY | AUDIO VISUAL | ICT | INTEGRATED SECURITY:

* BIOTECH CITY RIYADH - KSA



PROJECT SCOPE:

▶ SMART TECHNOLOGIES | SITE WIDE TELECOM NETWORK | AUDIO VISUAL | ICT | INTEGRATED SECURITY

* SOUDAH DEVELOPMENT



PROJECT SCOPE:

DESIGN ▶ TECHNOLOGY MASTERPLAN | SHOW CONTROL | AUDIO VISUAL | ICT | INTEGRATED SECURITY

* ISLAMIC CIVILIZATION VILLAGE
RUA AL MADINAH



DIRIYAH GATE



PROJECT TYPES

DESIGN SCOPE:

▶ AUDIO VISUAL | ICT | SECURITY | SMART DESTINATION TECHNOLOGIES | MARINA TECHNOLOGIES

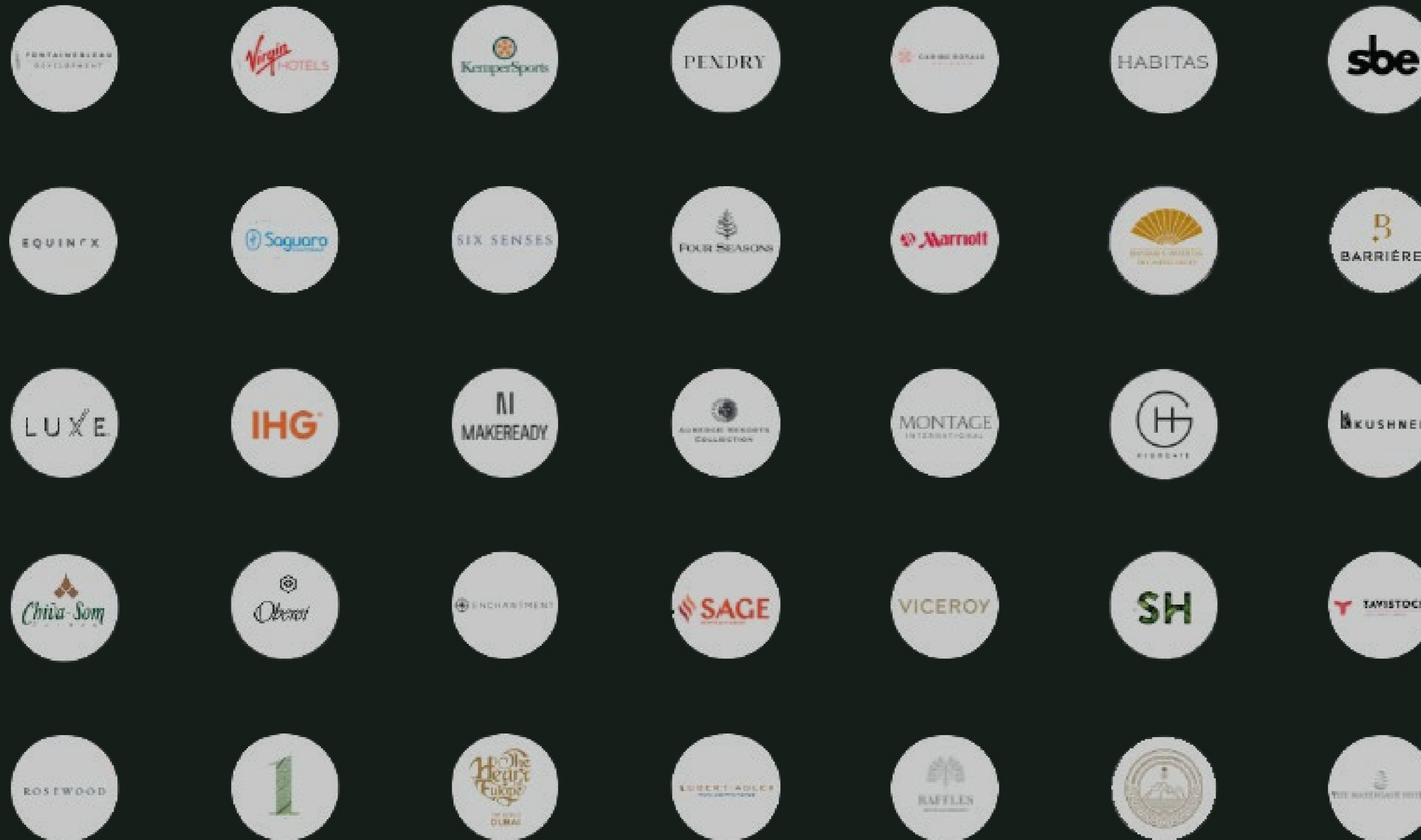
* DIRIYAH GATE / WADI SAFAR



* HABITAS / AL ULA KSA



Pre-qualified international brands



Company details.

CONSULTANCY COMPANY'S NAME

PLADCO & PARTNERS

HQ ADDRESS

8th Floor, Grand Tower, 4250 King Fahad Road,
8428 AlMohammadiyah District, Riyadh 12363,
Kingdom of Saudi Arabia

COMPANY LANDLINE NUMBER

+966 11 288 66 77

COMPANY MOBILE NUMBER

+966 505 36 45 98

COMPANY EMAIL ADDRESS

contact@pladco.com